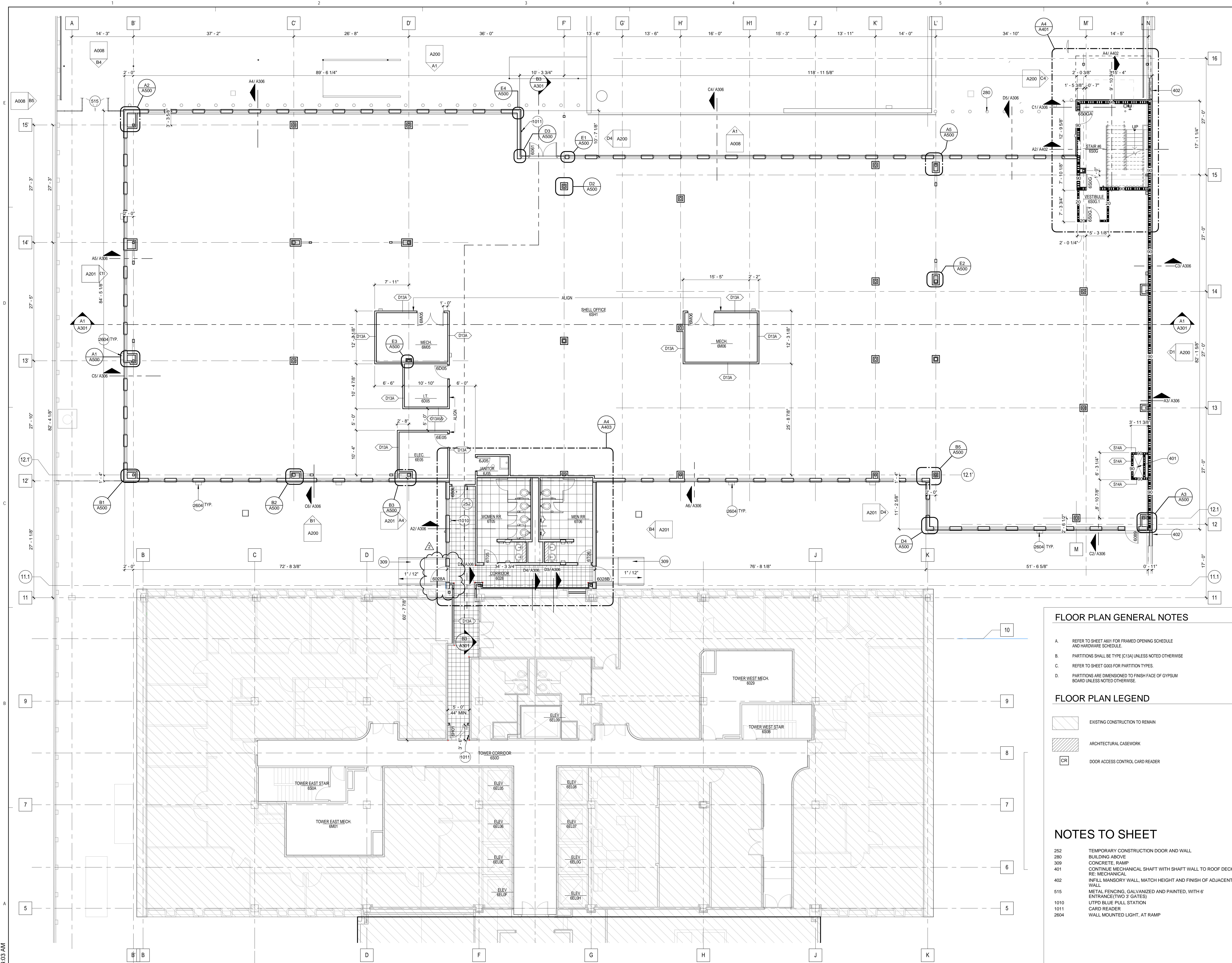


SHEETS ISSUED:

ARCHITECTURAL

A106	FLOOR PLAN
IF107	FINISH PLAN
A500	PLAN DETAILS
A515	EXTERIOR SECTION DETAILS
A601	DOOR, OPENINGS AND FRAME TYPES

REVISIONS		
NO.	DATE	DESCRIPTION
2	01-23-17	ADDENDUM #2



FLOOR PLAN GENERAL NOTES

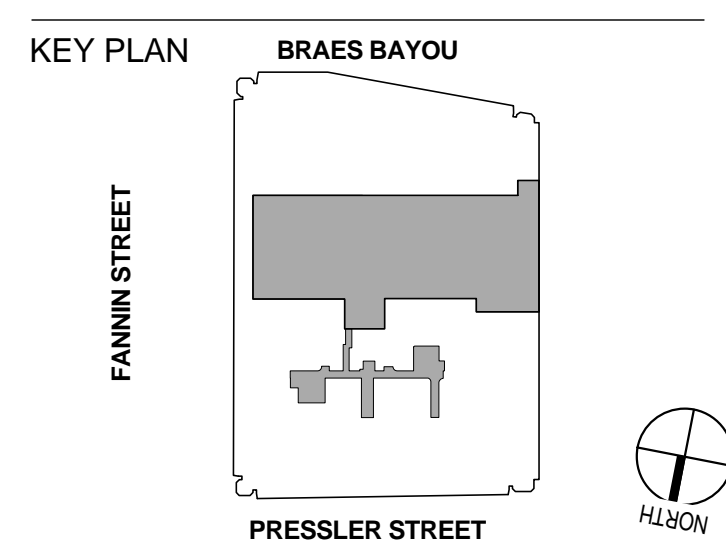
- A. REFER TO SHEET A601 FOR FRAMED OPENING SCHEDULE AND HARDWARE SCHEDULE.
- B. PARTITIONS SHALL BE TYPE (C13A) UNLESS NOTED OTHERWISE.
- C. REFER TO SHEET 6003 FOR PARTITION TYPES.
- D. PARTITIONS ARE DIMENSIONED TO FINISH FACE OF GYPSUM BOARD UNLESS NOTED OTHERWISE.

FLOOR PLAN LEGEND

- EXISTING CONSTRUCTION TO REMAIN
- ARCHITECTURAL CASEWORK
- DOOR ACCESS CONTROL CARD READER

NOTES TO SHEET

- 262 TEMPORARY CONSTRUCTION DOOR AND WALL BUILDING ABOVE
- 309 CONCRETE, RAMP
- 401 CONTINUE MECHANICAL SHAFT WITH SHAFT WALL TO ROOF DECK, RE-MECHANICAL
- 402 INFILL MANSORY WALL, MATCH HEIGHT AND FINISH OF ADJACENT WALL
- 515 METAL FENCING, GALVANIZED AND PAINTED, WITH 6" ENTRANCE (TWO 3' GATES)
- 1010 UTPD BLUE PULL STATION
- 1011 CARD READER
- 2604 WALL MOUNTED LIGHT, AT RAMP

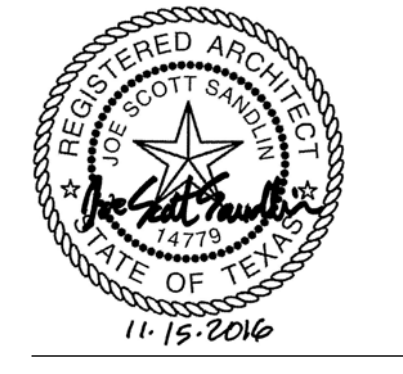


UCT VERTICAL EXPANSION



UTHSC-H UCT

7000 FANNIN HOUSTON, TX 77030



FLOOR PLAN

PHASE: 100% CD
DATE: 2016-11-15

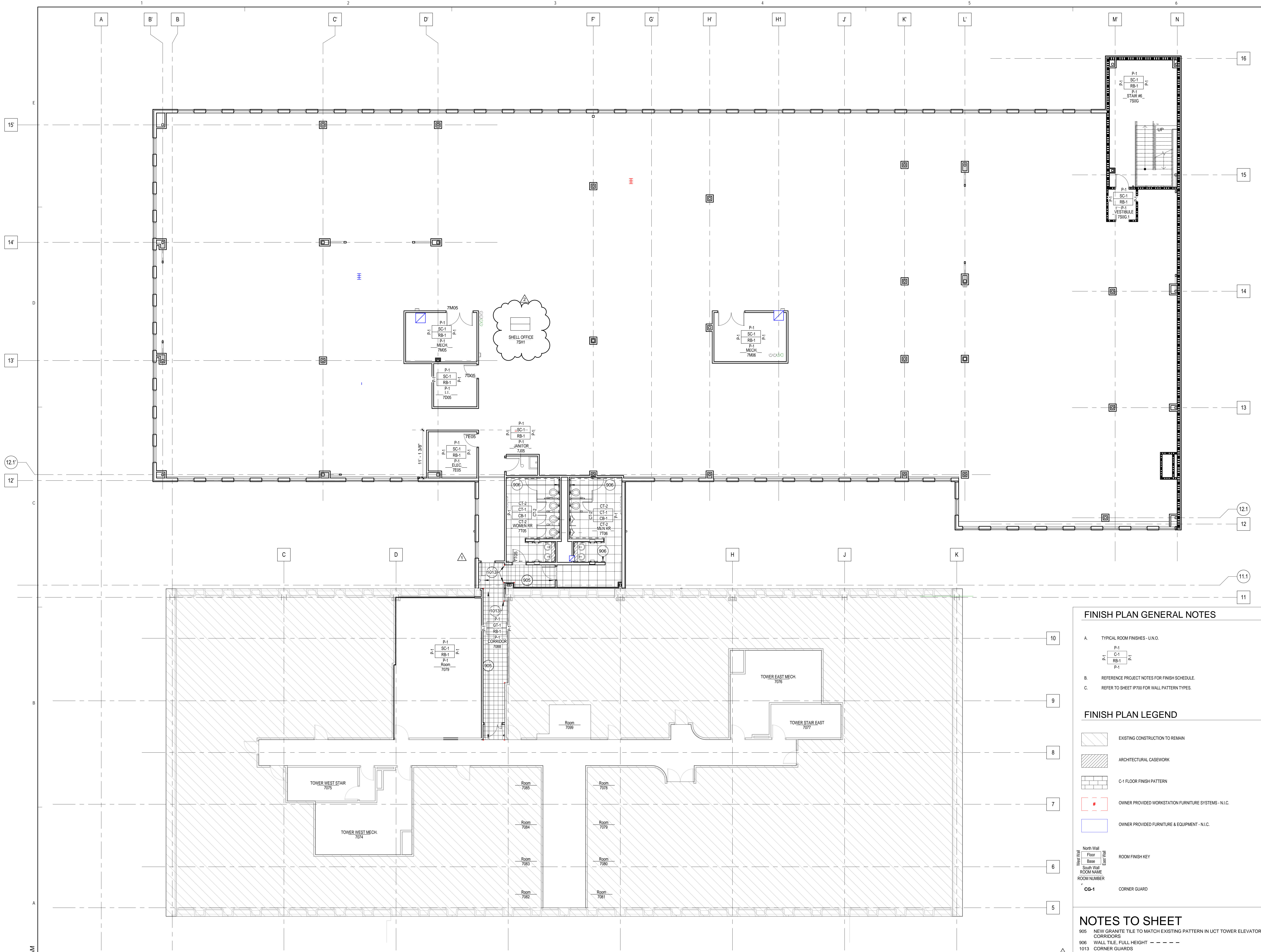
PROJECT NO: G15311-00
Copyright © 2015 WHR Architects, Inc.

A106

A1 FLOOR PLAN - LEVEL 6
SCALE: 1/8" = 1'-0"

1/23/2017 10:44:03 AM

REVISIONS		
NO.	DATE	DESCRIPTION
1	01-13-17	ADDENDUM #1
2	01-23-17	ADDENDUM #2



FINISH PLAN GENERAL NOTES

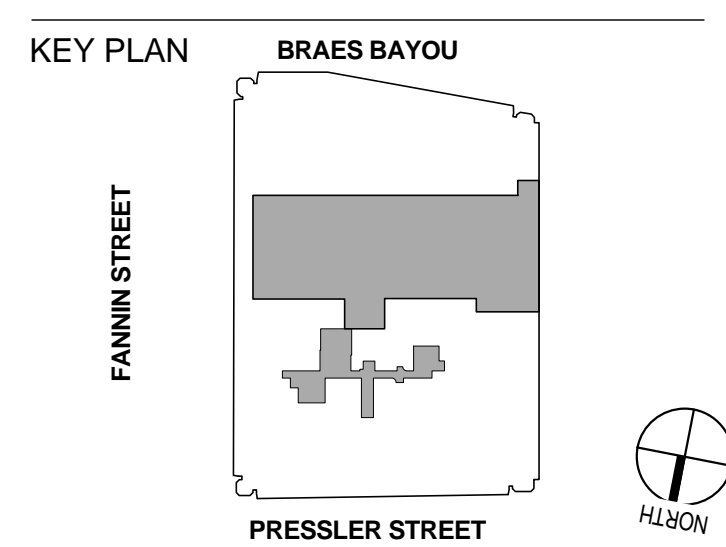
- A. TYPICAL ROOM FINISHES - U.N.O.
- B. REFERENCE PROJECT NOTES FOR FINISH SCHEDULE.
- C. REFER TO SHEET IF700 FOR WALL PATTERN TYPES.

FINISH PLAN LEGEND

- EXISTING CONSTRUCTION TO REMAIN
- ARCHITECTURAL CASEWORK
- C-1 FLOOR FINISH PATTERN
- OWNER PROVIDED WORKSTATION FURNITURE SYSTEMS - N.I.C.
- OWNER PROVIDED FURNITURE & EQUIPMENT - N.I.C.
- North Wall
- Floor
- Base
- South Wall
- East Wall
- ROOM NAME
- ROOM NUMBER
- CORNER GUARD

NOTES TO SHEET

- 905 NEW GRANITE TILE TO MATCH EXISTING PATTERN IN UCT TOWER ELEVATOR CORRIDORS
- 906 WALL TILE, FULL HEIGHT - - - - -
- 1013 CORNER GUARDS



UCT VERTICAL EXPANSION



UTHSC-H UCT

7000 FANNIN
HOUSTON, TX 77030



FINISH PLAN

PHASE: 100% CD
DATE: 2016-11-15

PROJECT NO: G15311-00
Copyright © 2015 WHR Architects, Inc.

IF107

NOTES TO SHEET

- 231 EXISTING EXPANSION JOINT
- 253 COMPRESSIBLE EXPANSION JOINT
- 302 PORTLAND CEMENT PLASTER SYSTEM
- 304 PLASTER LATH PAPER BACKED
- 404 MASONRY WALL
- 501 COLD FORMED METAL FRAMING, 6"
- 502 METAL STUD FRAMING
- 503 STRUCTURAL MEMBER, RE: STRUCTURAL
- 504 LIGHT GAUGE ZEE CLIPS, 2" X 2"
- 518 METAL FENCING, GALVANIZED AND PAINTED
- 519 ALUMINUM STROFRONT SYSTEM
- 520 ALUMINUM WINDOW SYSTEM
- 601 5/8" GYPSUM WALLBOARD
- 604 EXTERIOR SHEATHING BOARD
- 607 2HR WALL SYSTEM
- 701 MINERAL WOOL SEM-RIGID BOARD INSULATION, 2"
- 702 GLASS FIBER BATT INSULATION
- 706 WEATHER BARRIER
- 736 APPLIED FIBRE PROTECTIVE EXPANSION JOINT COVER

WHR ARCHITECTS
 1111 Louisiana 26th Floor
 Houston, TX 77002
 T 713 665 5665 whrarchitects.com

REVISIONS		
NO.	DATE	DESCRIPTION
2	01-23-17	ADDENDUM #2

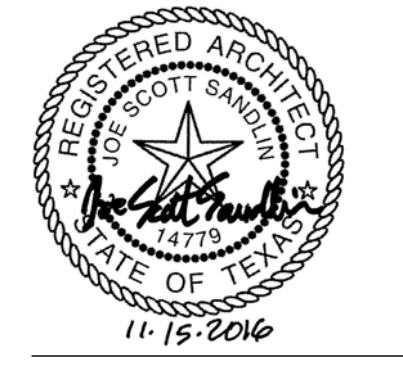
KEY PLAN

**UCT
 VERTICAL
 EXPANSION**



UTHSC-H UCT

7000 FANNIN
 HOUSTON, TX 77030



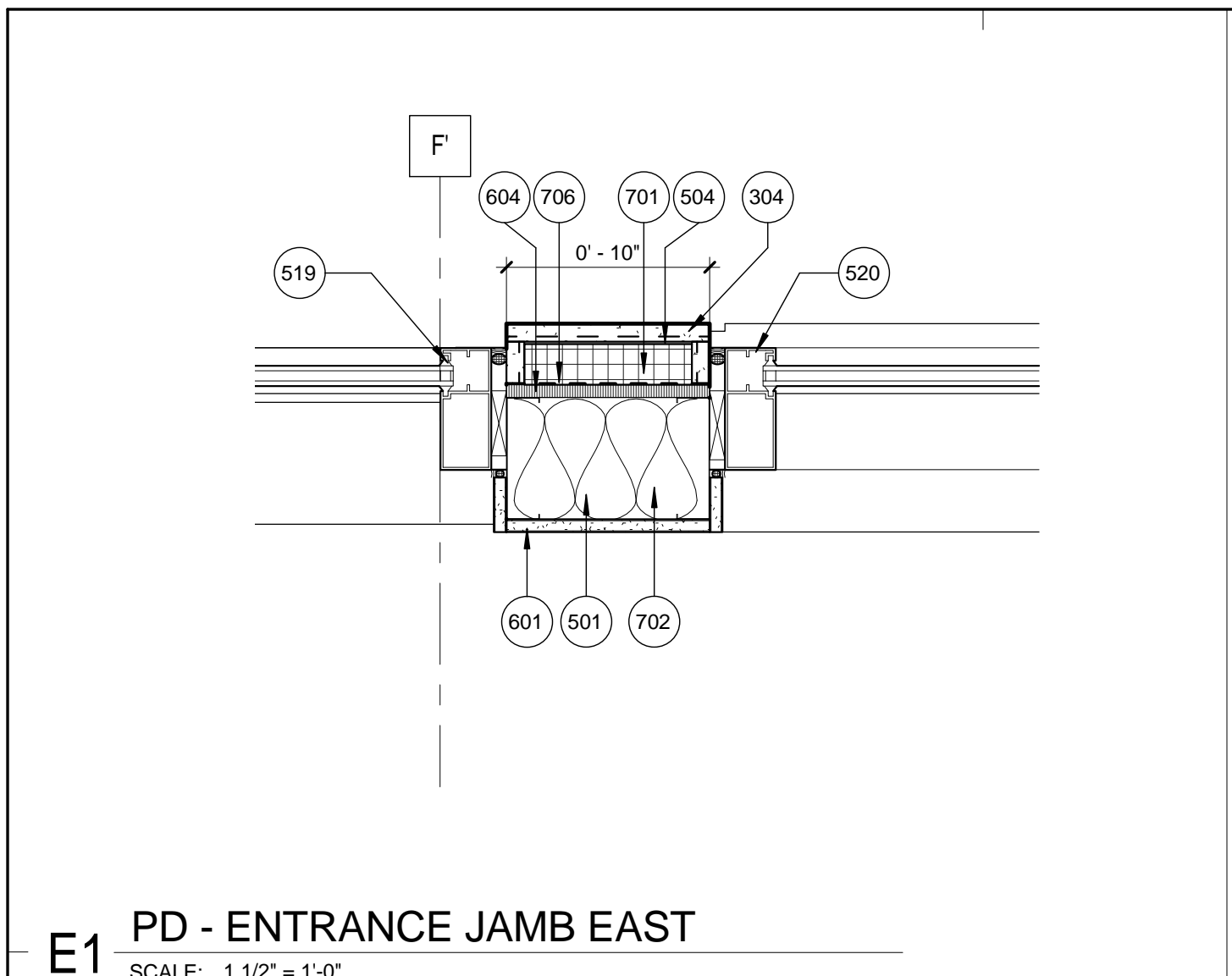
PLAN DETAILS

PHASE: 100% CD
 DATE: 2016-11-15

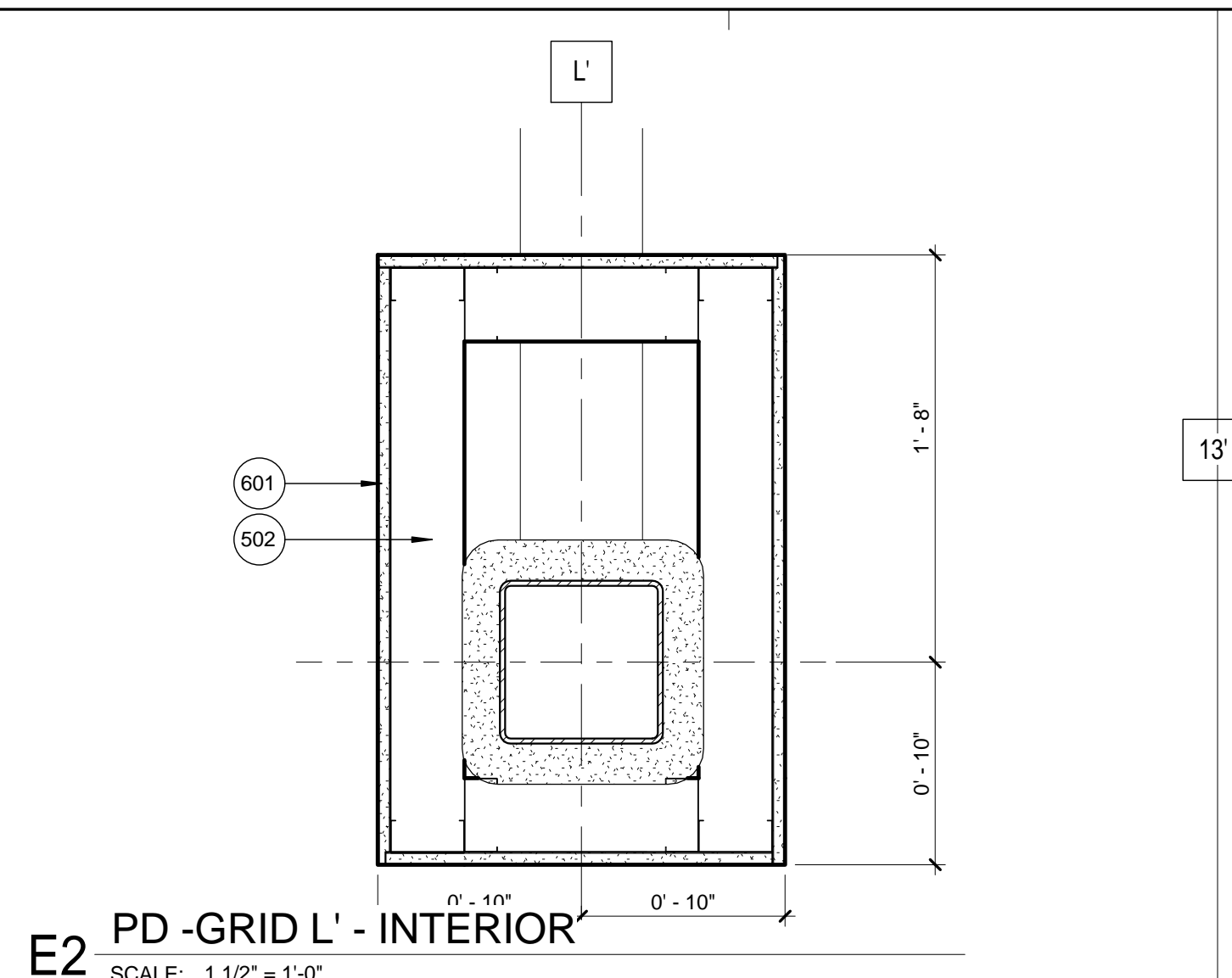
PROJECT NO.
 G15311-00

A500

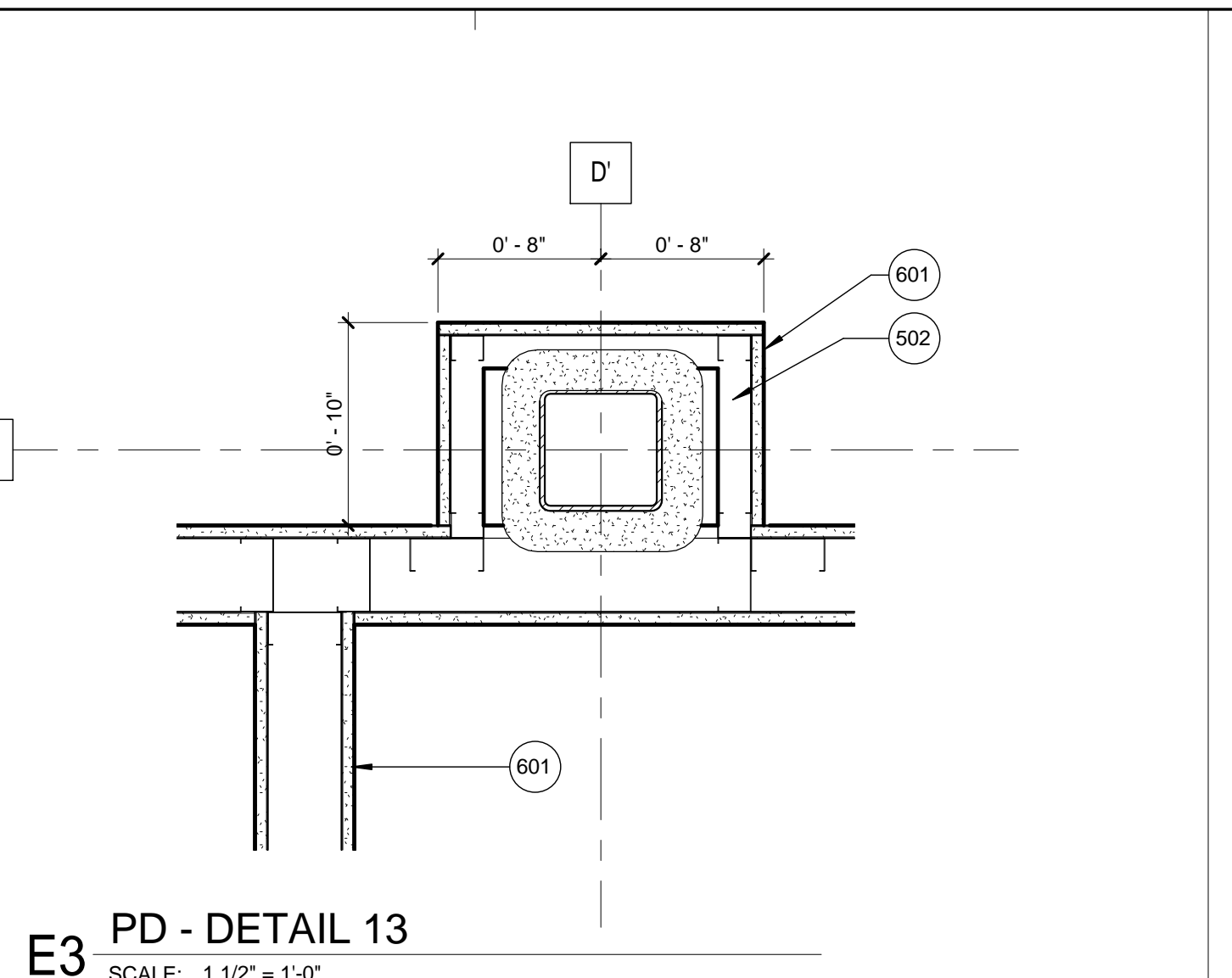
Copyright © 2015 WHR Architects, Inc.



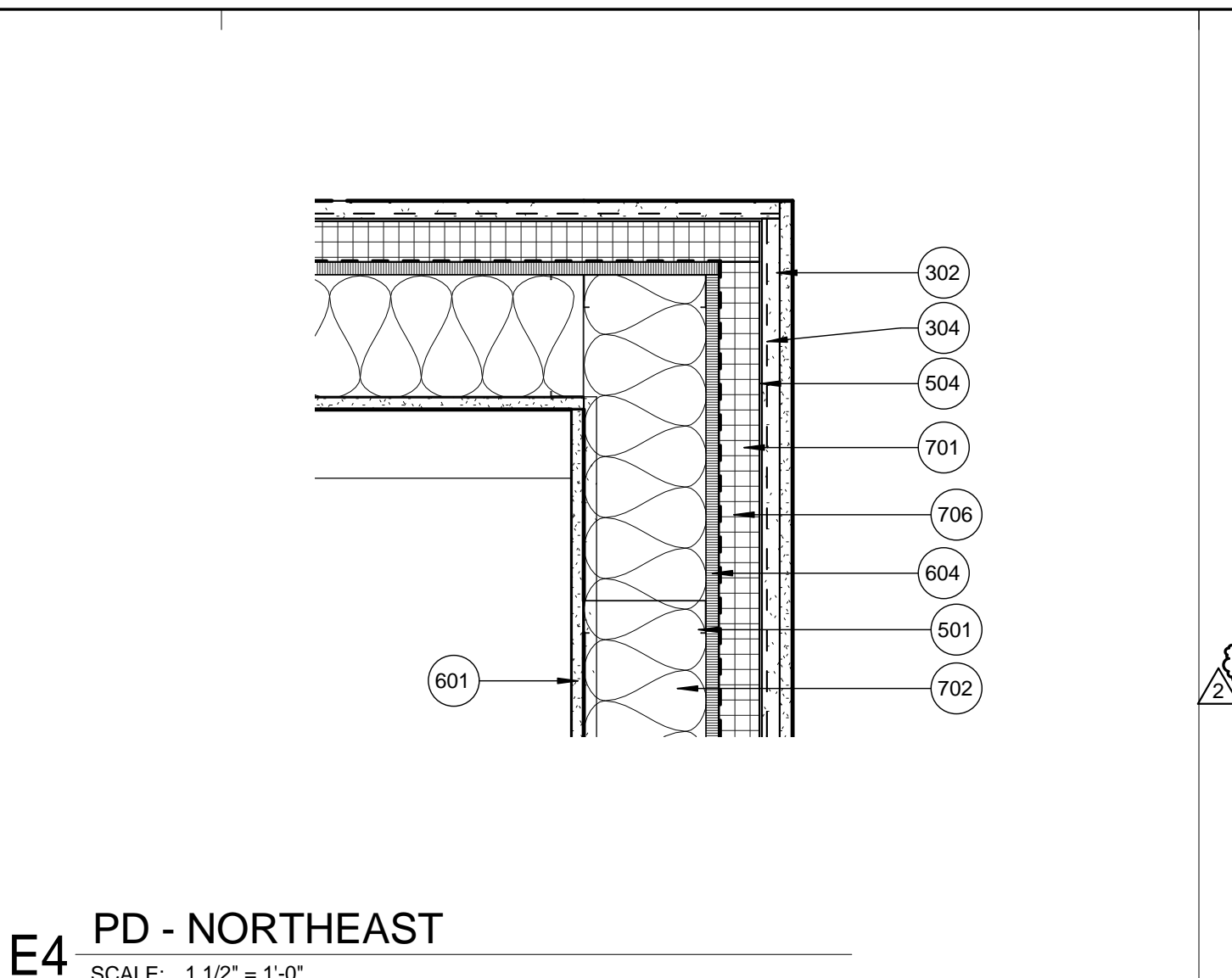
E1 PD - ENTRANCE JAMB EAST
 SCALE: 1 1/2" = 1'-0"



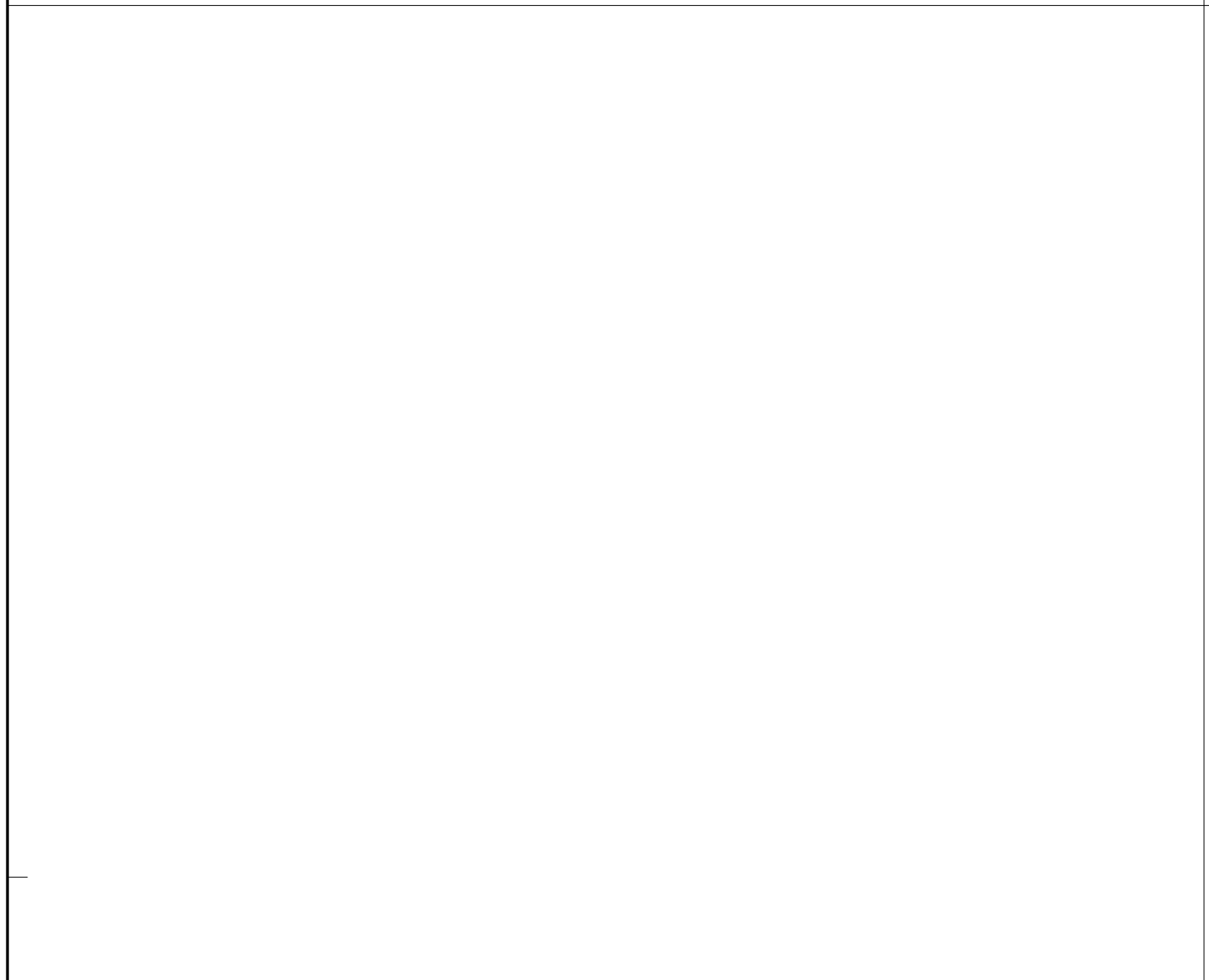
E2 PD - GRID L' - INTERIOR
 SCALE: 1 1/2" = 1'-0"



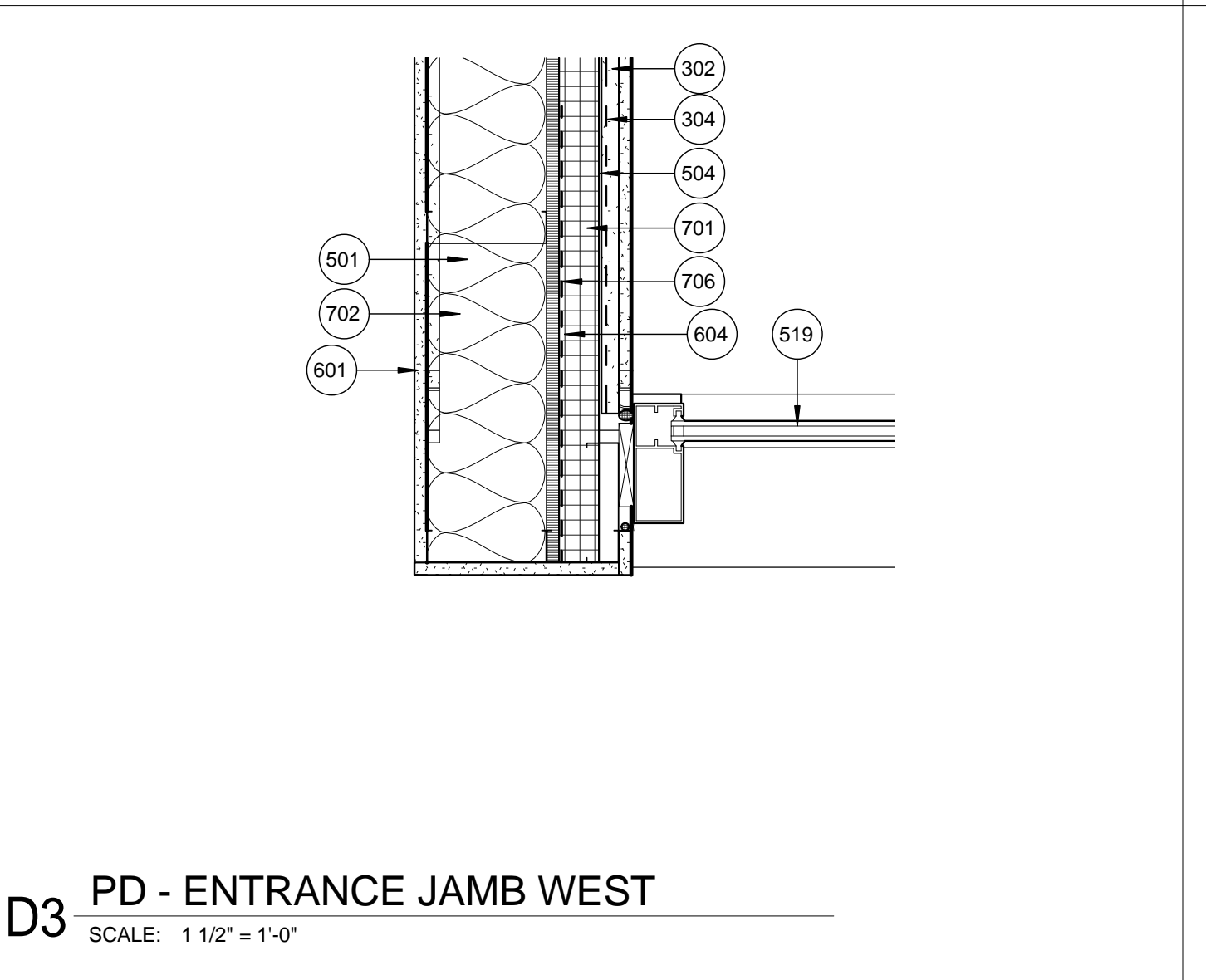
E3 PD - DETAIL 13
 SCALE: 1 1/2" = 1'-0"



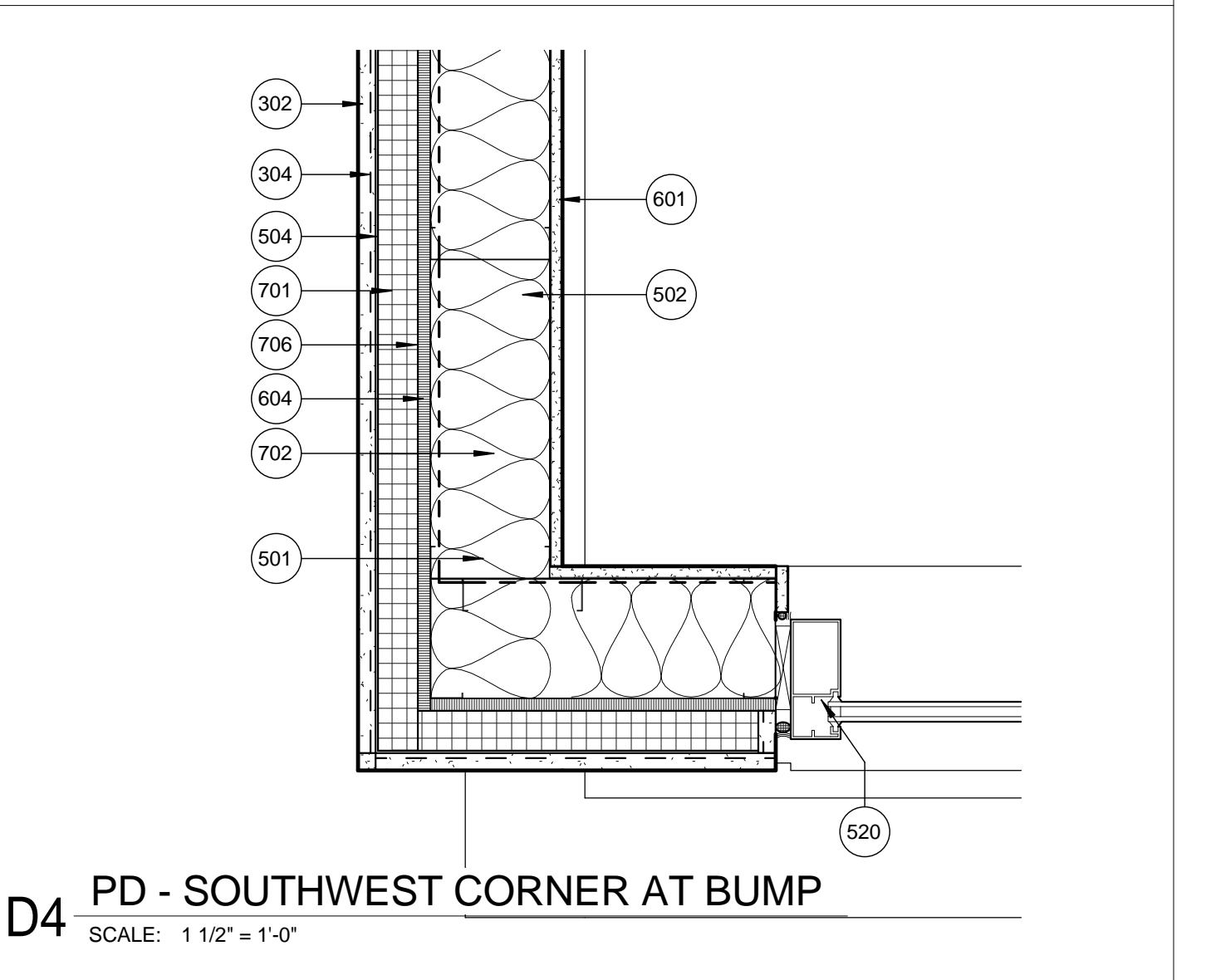
E4 PD - NORTHEAST
 SCALE: 1 1/2" = 1'-0"



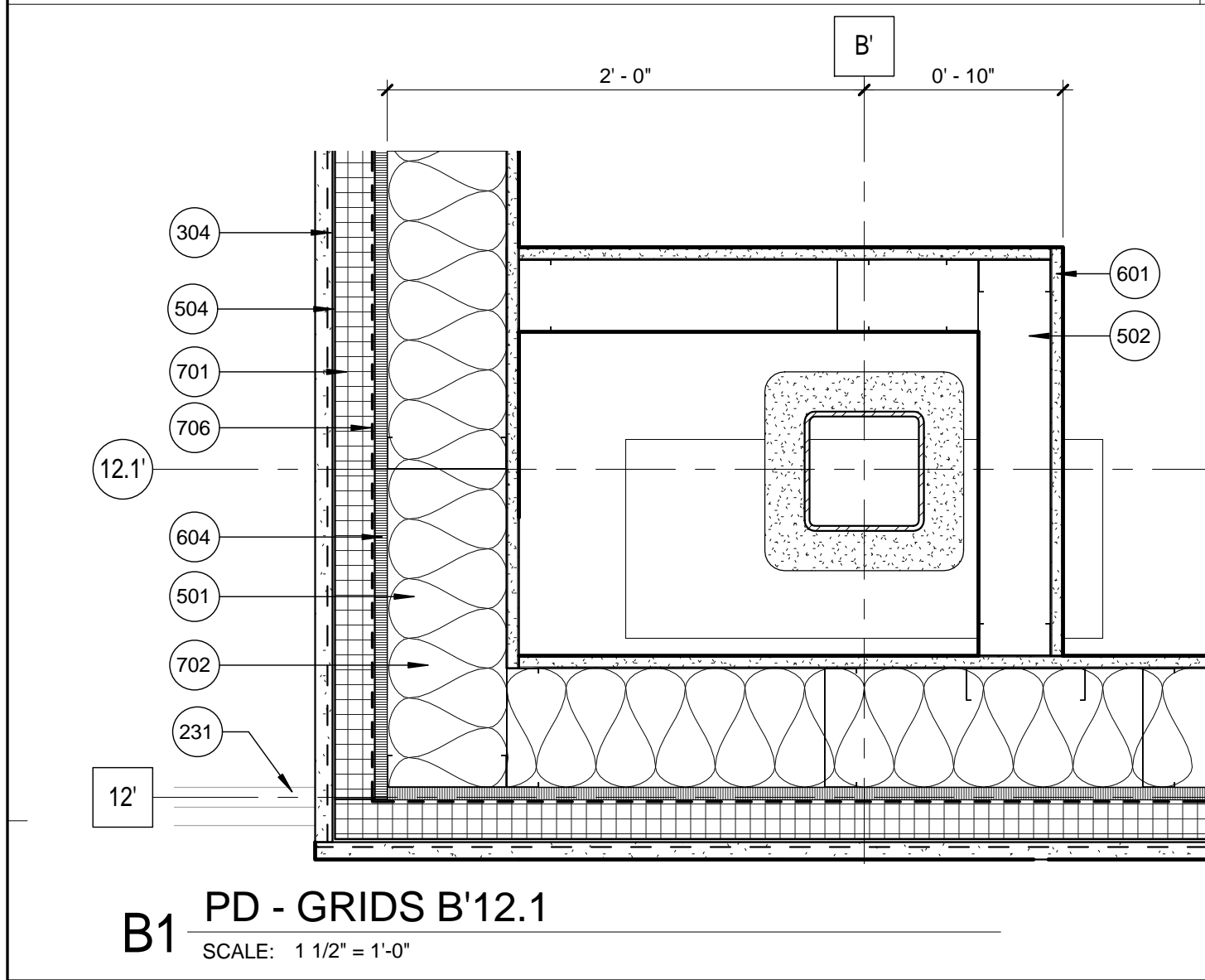
D2 PD - TYP. COLUMN WRAP
 SCALE: 1 1/2" = 1'-0"



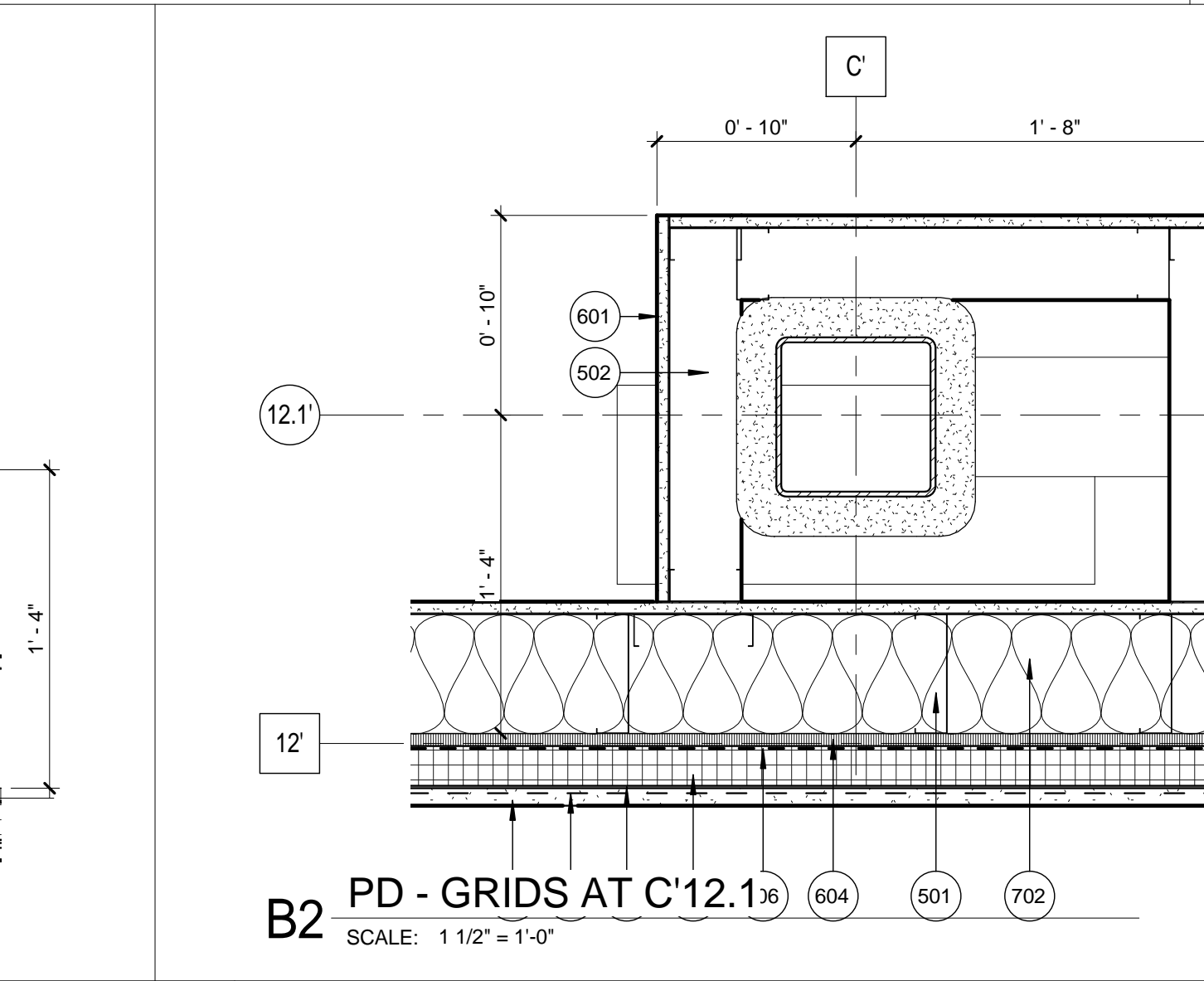
D3 PD - ENTRANCE JAMB WEST
 SCALE: 1 1/2" = 1'-0"



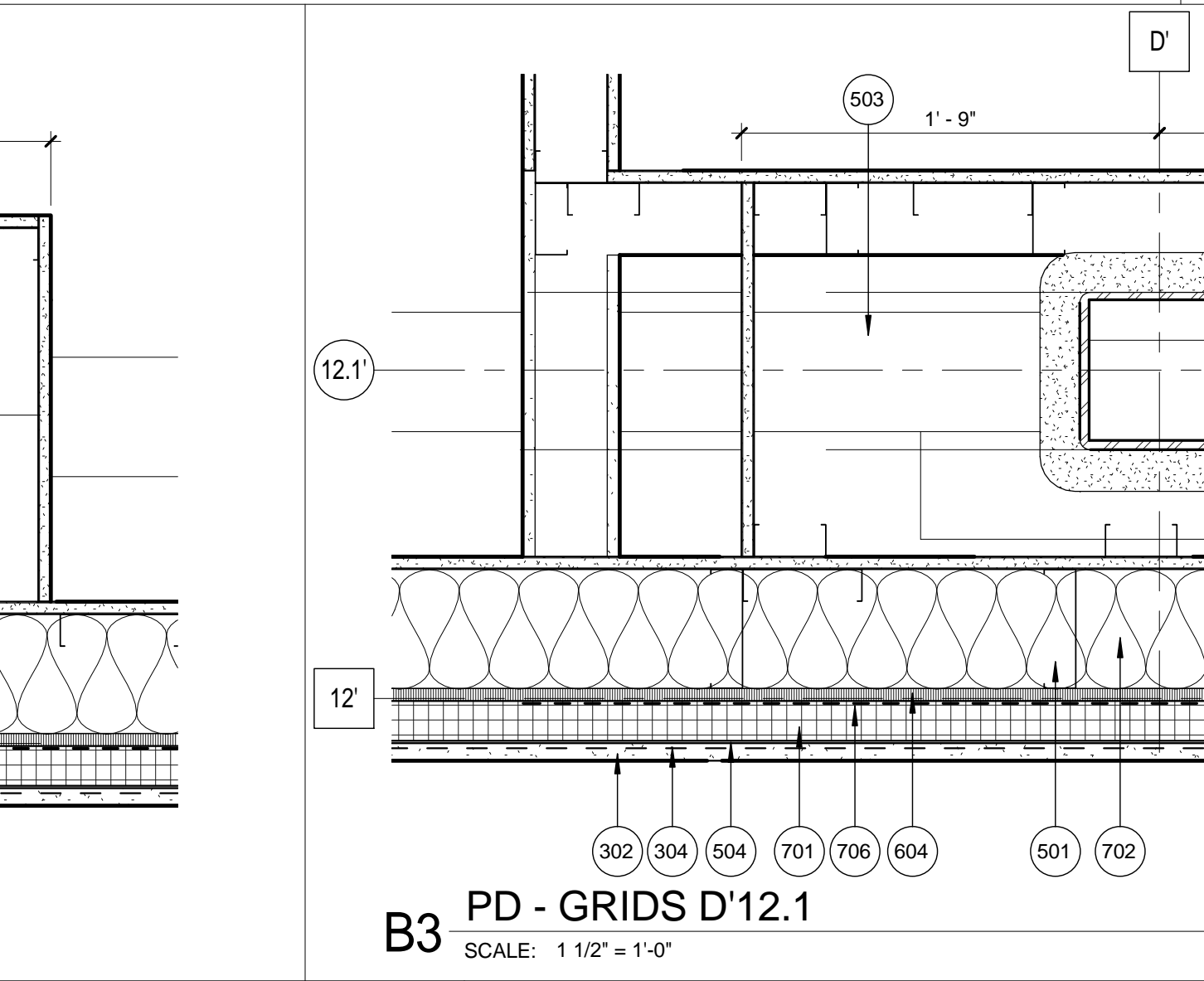
D4 PD - SOUTHWEST CORNER AT BUMP
 SCALE: 1 1/2" = 1'-0"



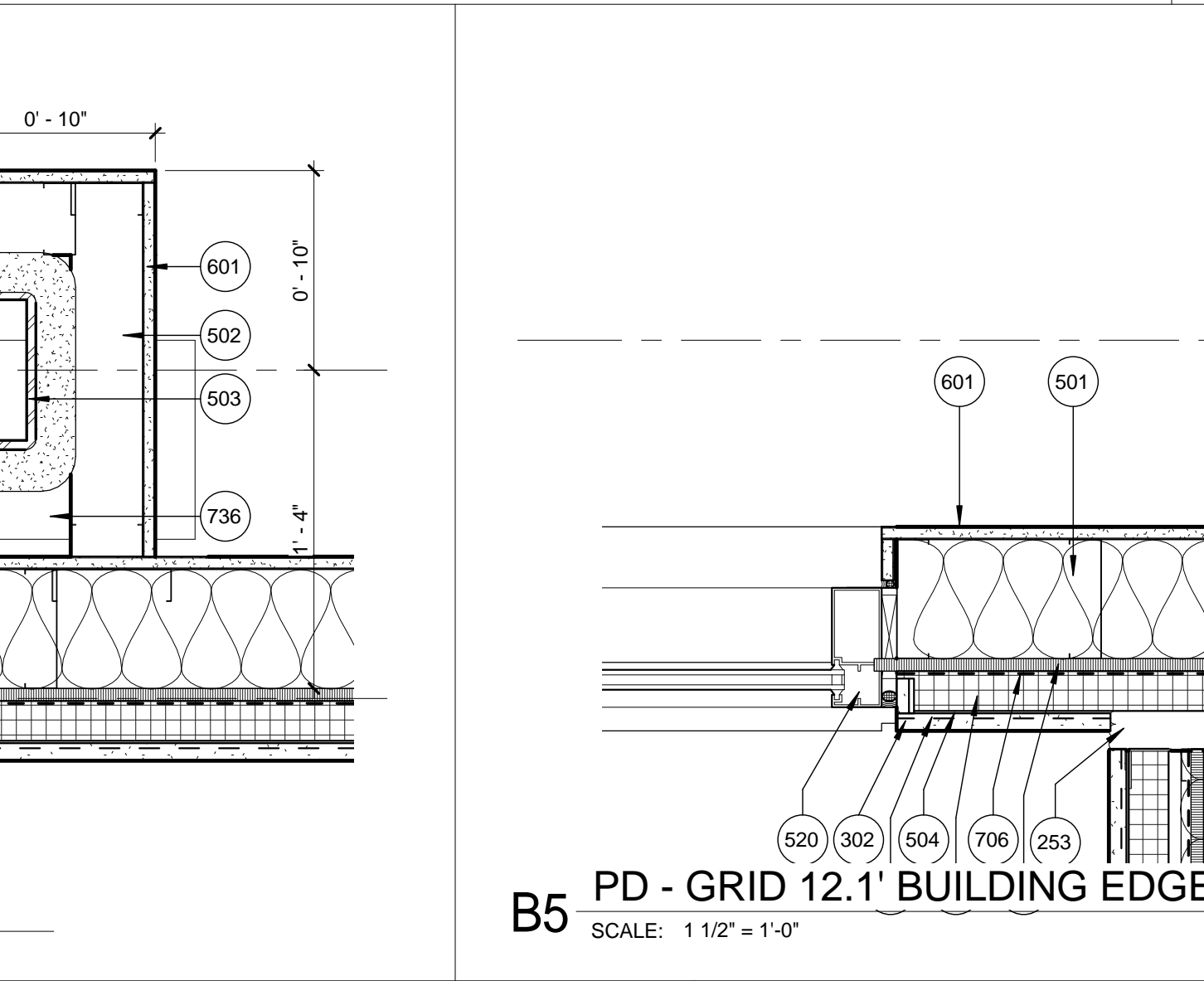
B1 PD - GRIDS B'12.1
 SCALE: 1 1/2" = 1'-0"



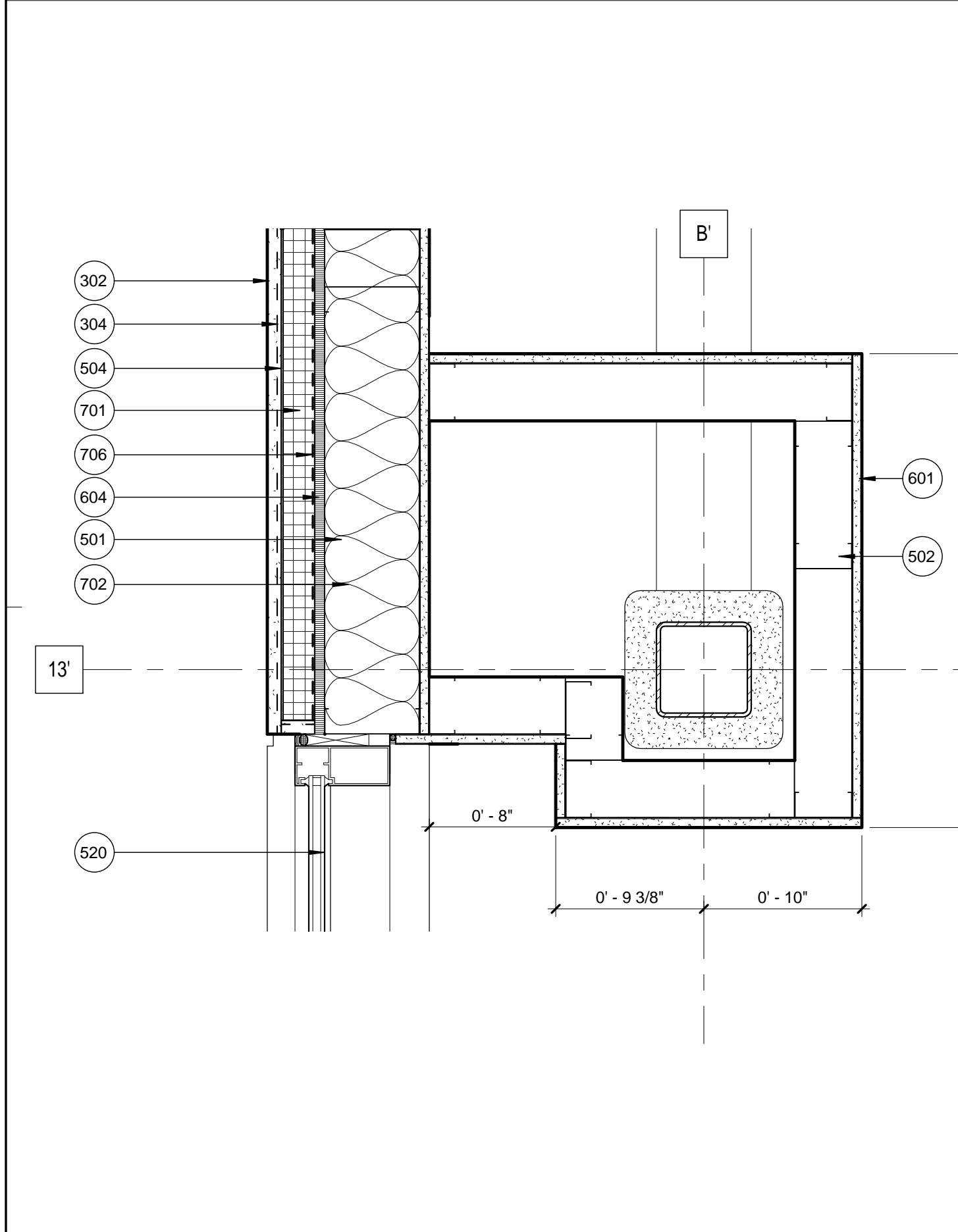
B2 PD - GRIDS AT C'12.1
 SCALE: 1 1/2" = 1'-0"



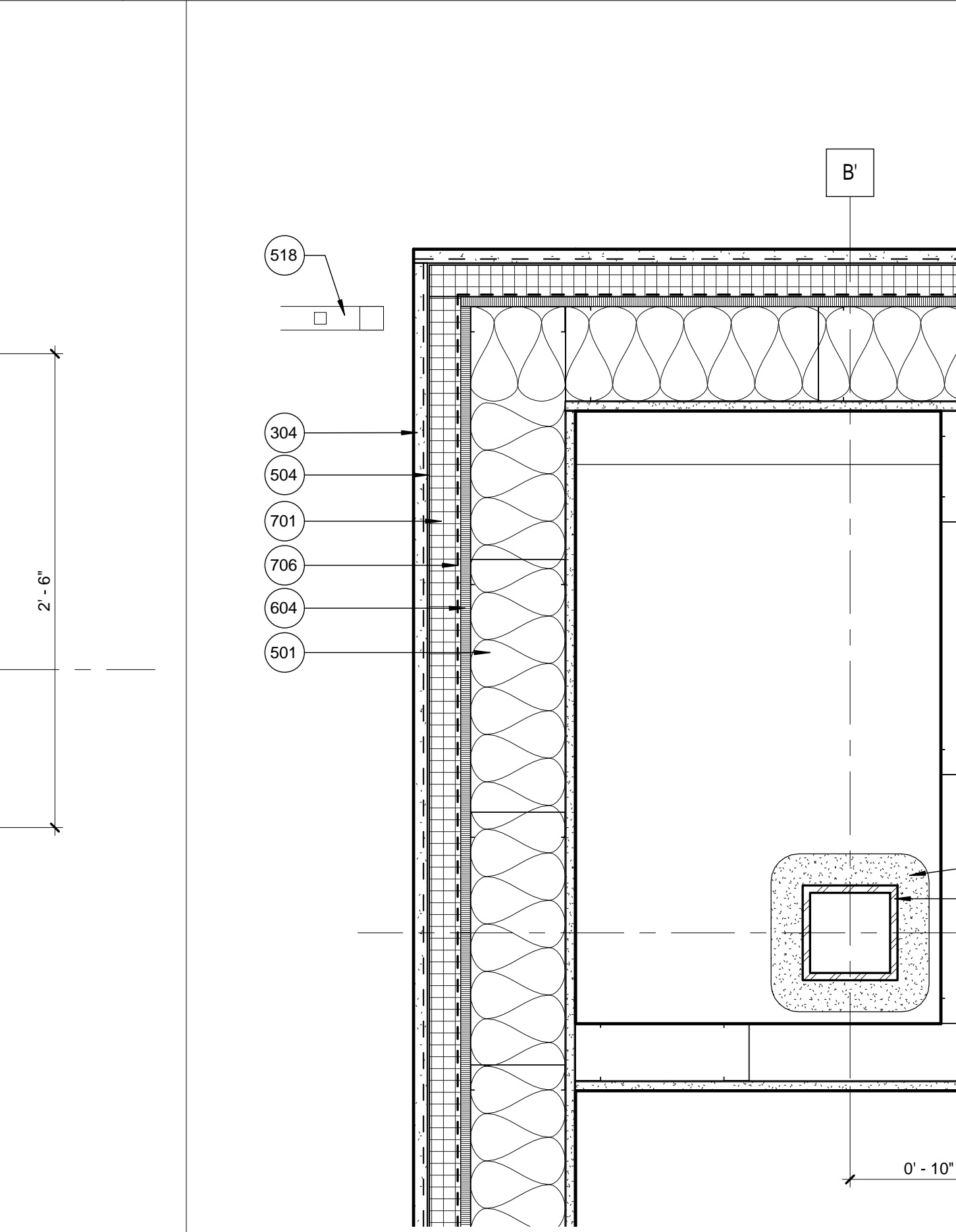
B3 PD - GRIDS D'12.1
 SCALE: 1 1/2" = 1'-0"



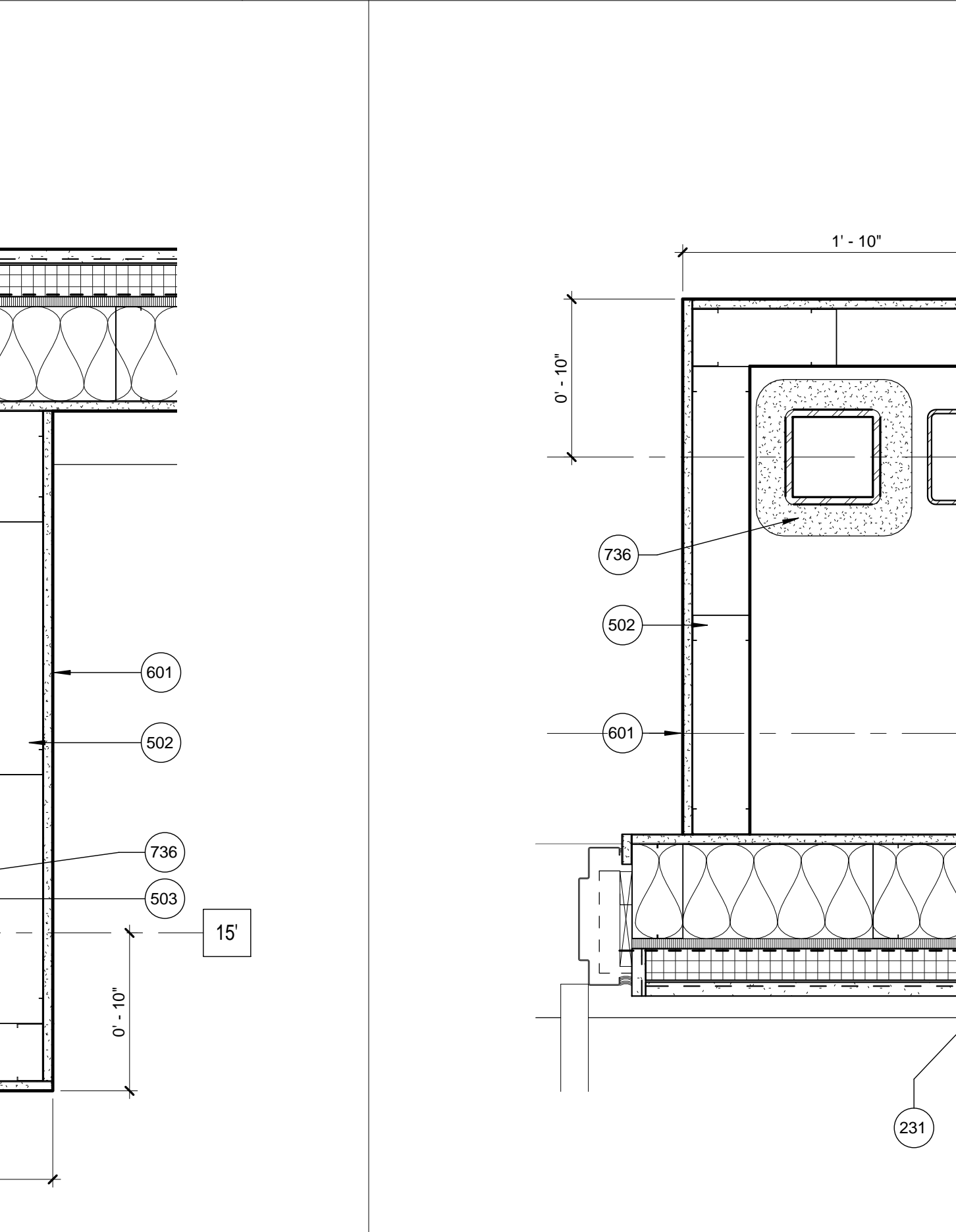
B5 PD - GRID 12.1' BUILDING EDGE
 SCALE: 1 1/2" = 1'-0"



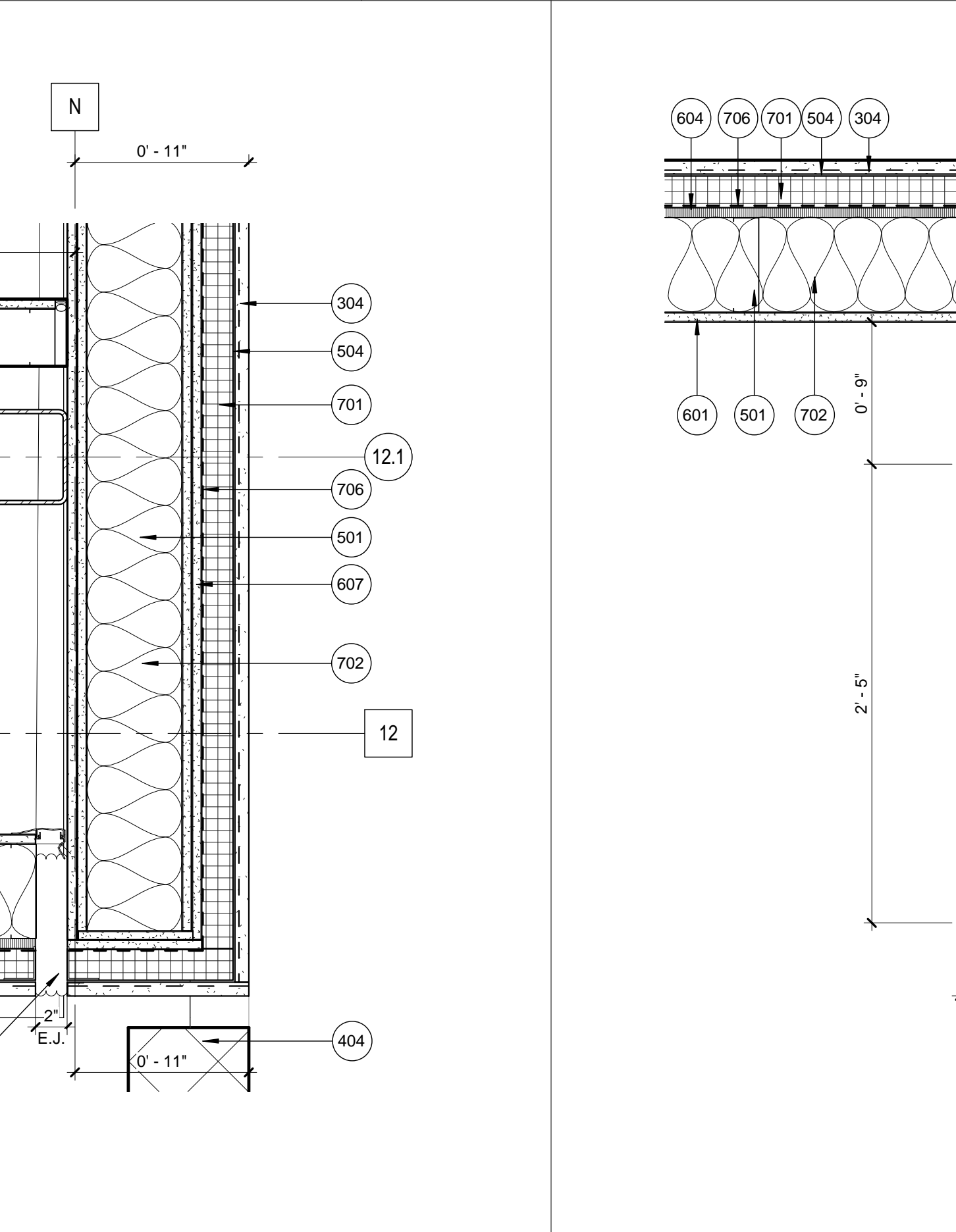
A1 PD - GRIDS B'13
 SCALE: 1 1/2" = 1'-0"



A2 PD - GRIDS B'15
 SCALE: 1 1/2" = 1'-0"



A3 PD - GRIDS N12
 SCALE: 1 1/2" = 1'-0"

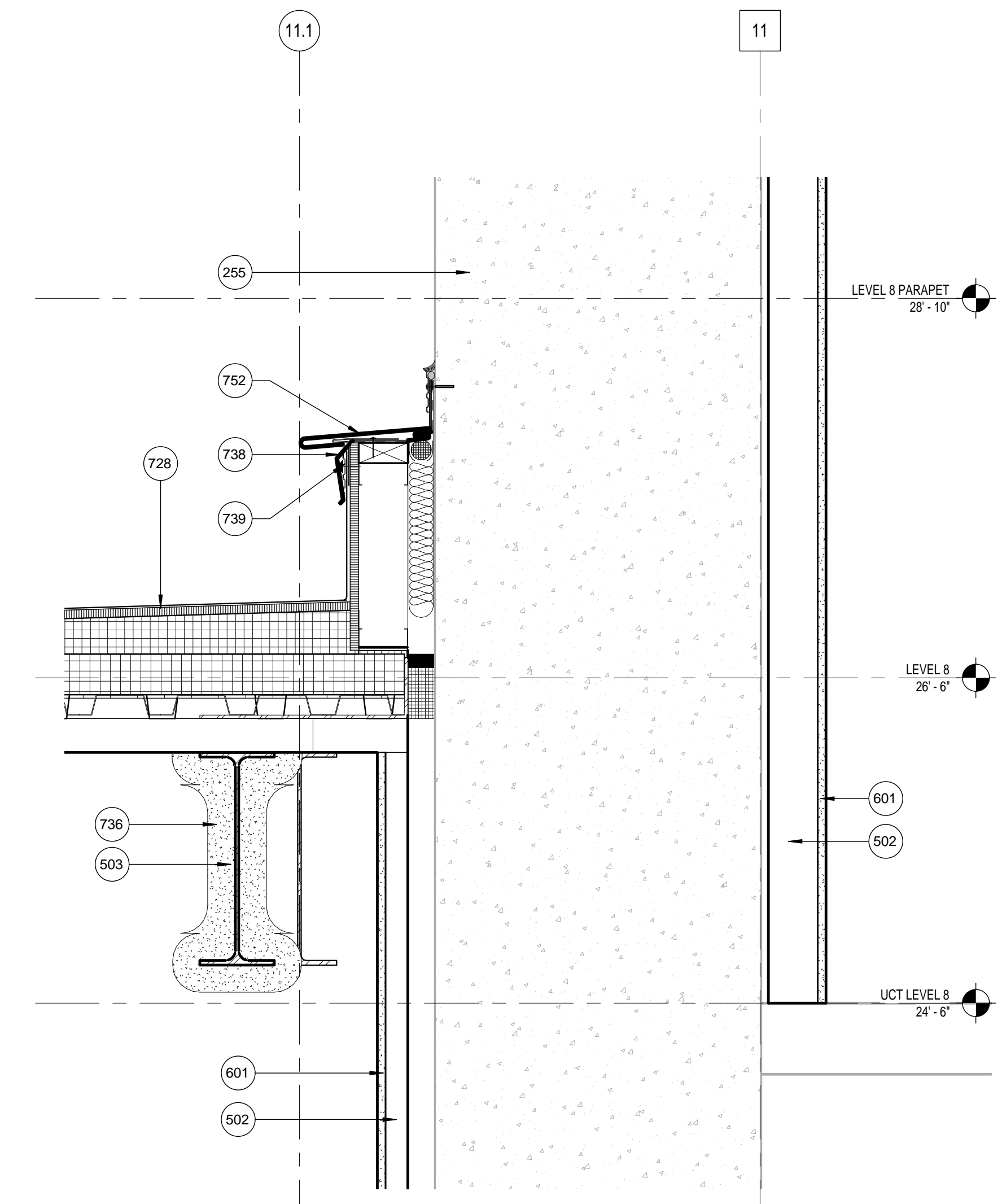


A5 PD - GRID L' BUILDING EDGE
 SCALE: 1 1/2" = 1'-0"

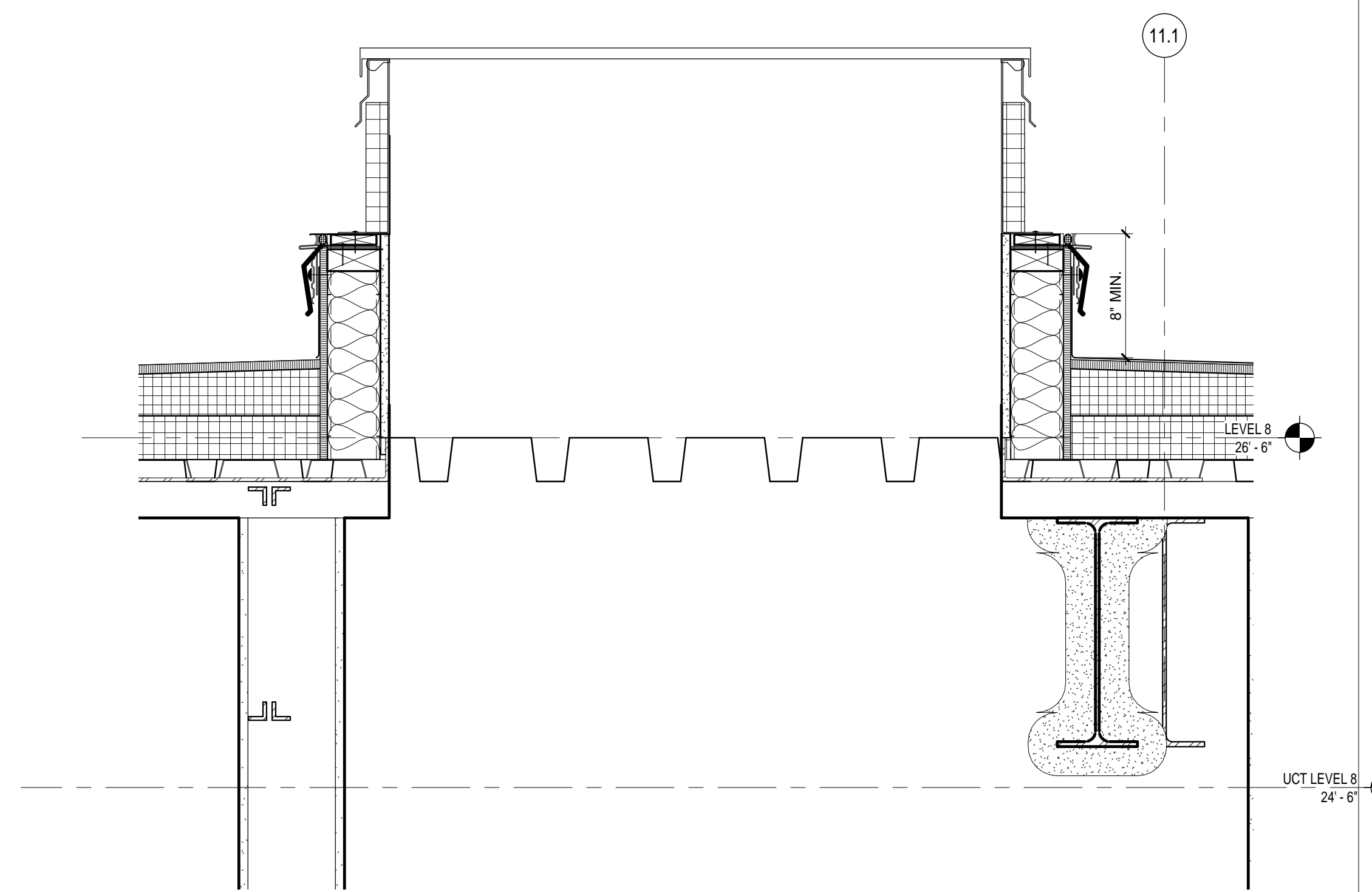
1/23/2017 10:53:21 AM

NOTES TO SHEET

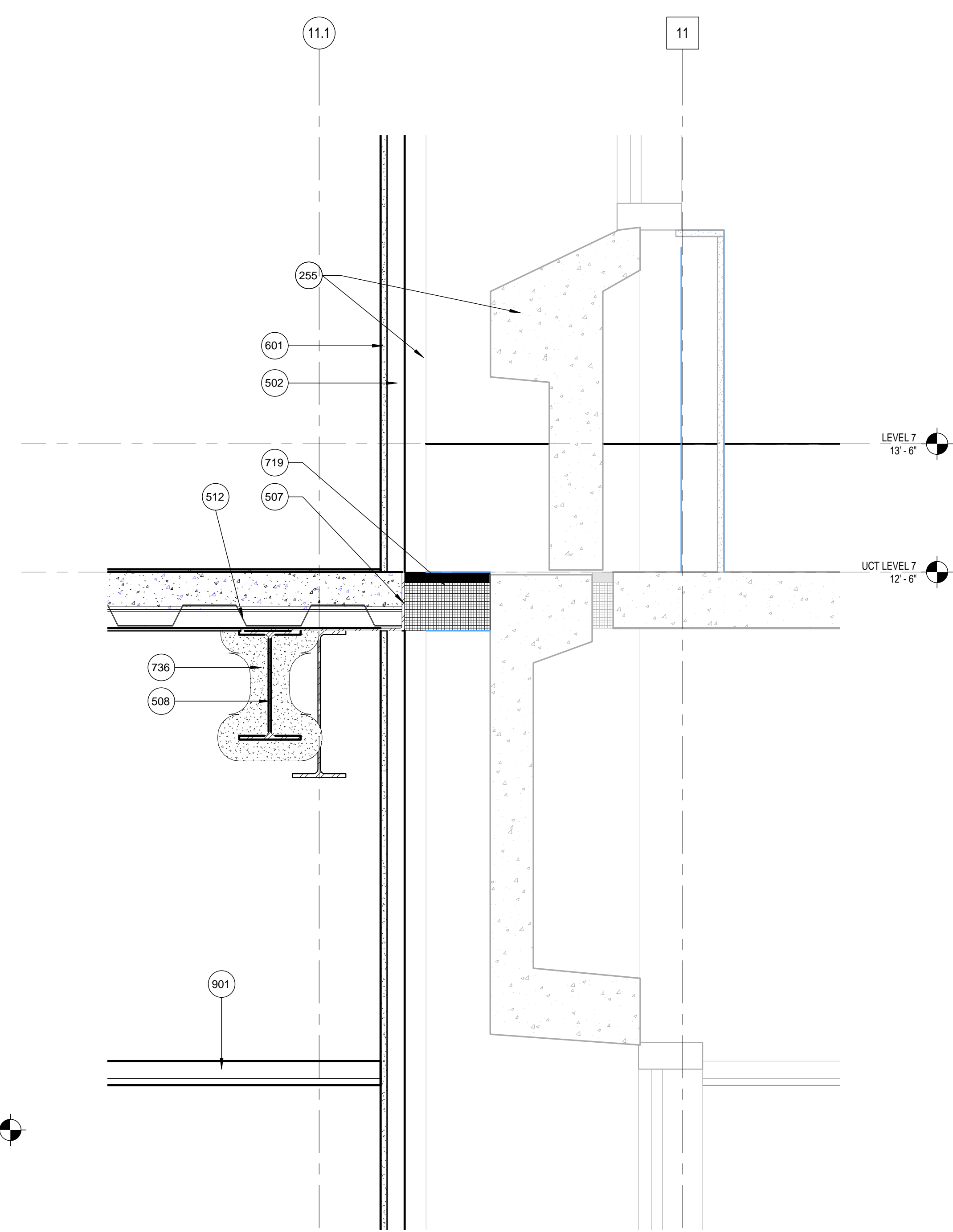
- 255 EXISTING PRECAST
- 502 METAL STUD FRAMING
- 503 STRUCTURAL MEMBER, RE. STRUCTURAL
- 507 BENT PLATE
- 508 STEEL BEAM W/SPAY FIREPROOFING
- 512 METAL COMPOSITE DECK
- 601 5/8" GYPSUM WALLBOARD
- 719 FLOOR FIRESTOP
- 728 TPO ROOFING SYSTEM
- 736 APPLIED FIRE PROOFING
- 738 STAINLESS STEEL FLASHING, SET IN FULL BED OF SEALANT
- 739 TERMINATION BAR
- 752 EXPANSION JOINT COVER
- 901 SCHEDULED CEILING



D5 ES - ROOF AT LINK/UCT
SCALE: 1 1/2" = 1'-0"



A3 ES - SECTION AT ROOF HATCH
SCALE: 1 1/2" = 1'-0"



A5 ES - UCT LEVEL 7 AT UCT/LINK
SCALE: 1 1/2" = 1'-0"

REVISIONS		
NO.	DATE	DESCRIPTION
2	01-23-17	ADDENDUM #2

KEY PLAN

**UCT
VERTICAL
EXPANSION**



UTHSC-H UCT

7000 FANNIN
HOUSTON, TX 77030

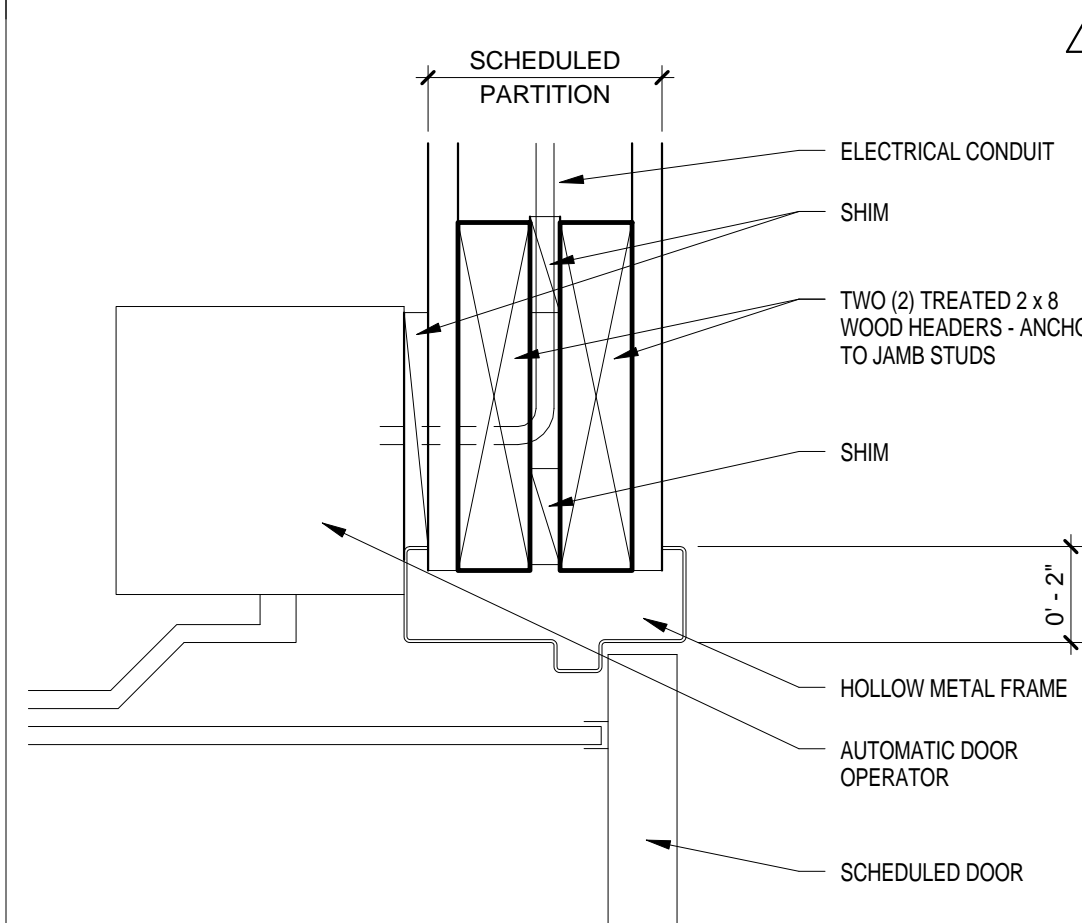


EXTERIOR SECTION
DETAILS

PHASE: 100% CD
DATE: 2016-11-15

PROJECT NO.
G15311-00

A515



7 AUTO. DOOR HEAD

Framed Opening Schedule														
Mark	Type	Material	Finish	Width	Height	Type	Frame Material	Finish	Glazing	HDW	Rev Date	Comments	Level	Fire Rating (MIN)
7T09				4'-0"	1'-0"							ROOF HATCH		
LEVEL 5														
5067	F			3'-0"	7'-0"	1	HM			1			LEVEL 5	90
LEVEL 6														
6D05	F			3'-0"	7'-0"	1	AL			108			LEVEL 6	--
6E05	F			3'-0"	7'-0"	1	AL			108			LEVEL 6	--
6H01	UP			4'-0"	7'-0"	1	AL			103			LEVEL 6	--
6J05	F			3'-0"	7'-0"	1	AL			107			LEVEL 6	--
6M05	FP			6'-0"	7'-0"	1	AL			109			LEVEL 6	--
6M06	FP			6'-0"	7'-0"	1	AL			109			LEVEL 6	--
6S0G	F			3'-0"	7'-0"	1	HM			101			LEVEL 6	90
6S0G.1	F			3'-0"	7'-0"	1	AL			102			LEVEL 6	45
6S0GA	F			3'-0"	7'-0"	1	HM			3			LEVEL 6	90
6S0L *	F			3'-0"	7'-0"	1	AL			104			LEVEL 6	--
6T05	F			3'-0"	7'-0"	1	AL			105			LEVEL 6	--
6T06	F			3'-0"	7'-0"	1	AL			105			LEVEL 6	--
6028A	F			3'-6"	7'-0"	1	HM			2			LEVEL 6	--
6028B	F			3'-6"	7'-0"	1	HM			2			LEVEL 6	--
6033	F			3'-0"	7'-6"	1	HM			1			LEVEL 6	90
6061				6'-4"	7'-9 1/2"	1	AL			4			LEVEL 6	--
6089	F			3'-0"	7'-0"	1	HM			2			LEVEL 6	--
LEVEL 7														
7D05	F			3'-0"	7'-0"	1	AL			108			LEVEL 7	--
7E05	F			3'-0"	7'-0"	1	AL			108			LEVEL 7	--
7H01	UP			4'-0"	7'-0"	1	AL			103			LEVEL 7	--
7J05	F			3'-0"	7'-0"	1	AL			107			LEVEL 7	--
7M05	FP			6'-0"	7'-0"	1	AL			109			LEVEL 7	--
7M06	FP			6'-0"	7'-0"	1	AL			109			LEVEL 7	--
7S0G	F			3'-0"	7'-0"	1	HM			101			LEVEL 7	45
7S0G.1	F			3'-0"	7'-0"	1	AL			102			LEVEL 7	45
LEVEL 8														
8SOG	F			3'-0"	7'-0"	1	HM			5			LEVEL 8	45
UCT LEVEL 7														
7SH1 *	F			3'-0"	8'-0"	1	AL			104			UCT LEVEL 7	--
7T05	F			3'-0"	7'-0"	1	AL			105			UCT LEVEL 7	--
7T06	F			3'-0"	7'-0"	1	AL			106			UCT LEVEL 7	--

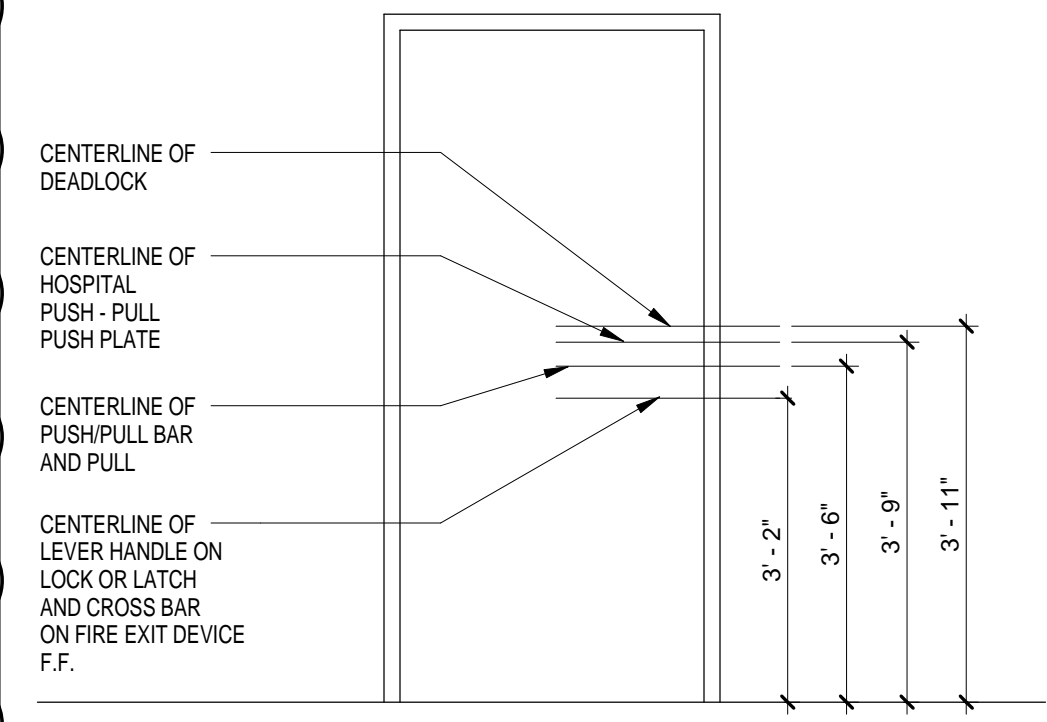
GENERAL NOTES

- A. RE-USE SALVAGED DOOR SLABS AND DOOR HARDWARE - TYP
- B. PROVIDE NEW DOOR SLABS AND DOOR HARDWARE TO MATCH EXISTING AS REQUIRED FOR INCREASED QUANTITIES
- C. PROVIDE NEW DOOR HARDWARE TO MATCH EXISTING AS REQUIRED FOR CHANGE IN FUNCTION
- D. PROVIDE NEW CORES FOR ALL OPENINGS: W/ THREE KEYS PER CORE. SEE SPECS FOR KEYING AND CYLINDERS
- E. IG-1 GLASS AT INTERIOR WINDOW FRAMES AND DOOR LITES - TYP - U.N.O.
- F. PROVIDE KEY LOCK TO EXTERIOR SECURITY GATE RE: BKA008

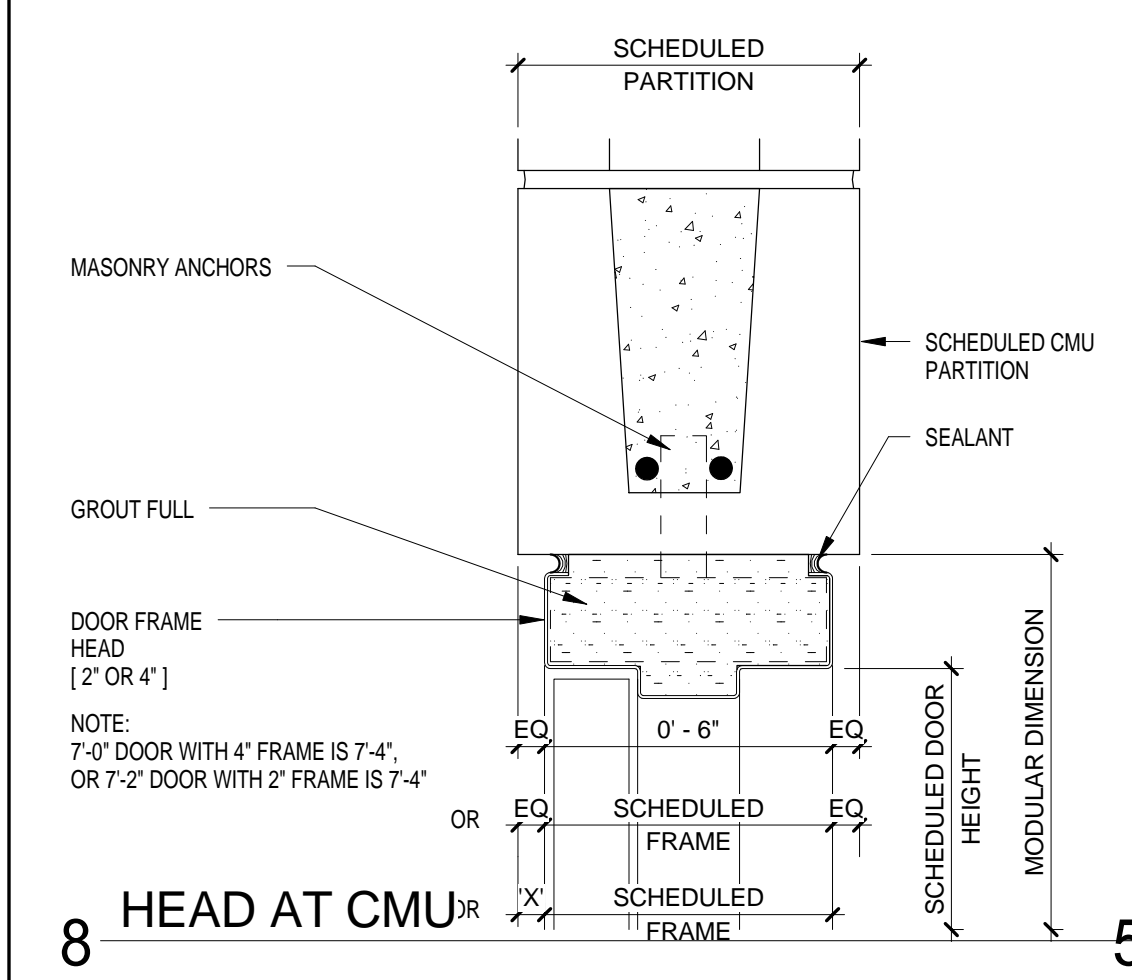
WHR ARCHITECTS

1111 Louisiana 26th Floor
Houston, TX 77002
T 713 665 5665 whrarchitects.com

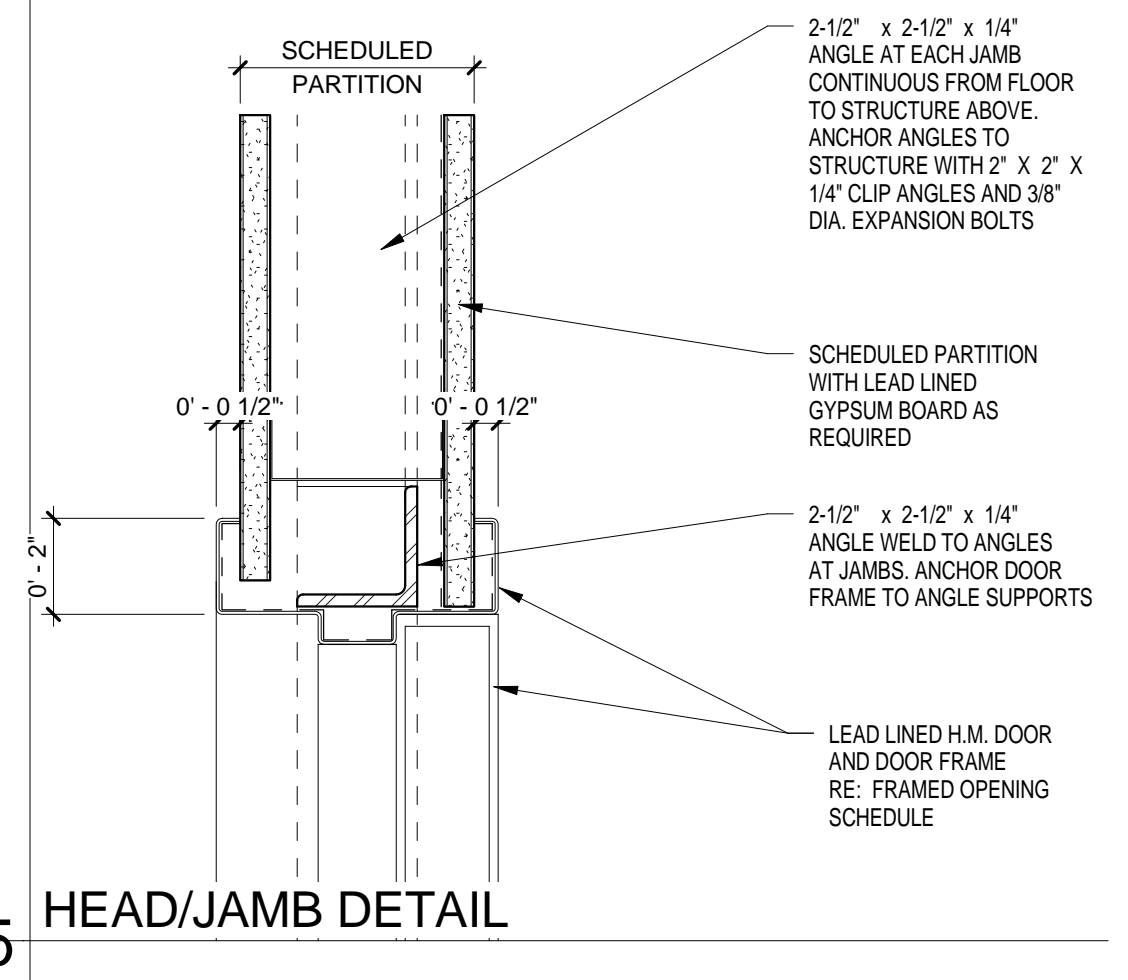
REVISIONS		
NO.	DATE	DESCRIPTION
1	01-13-17	ADDENDUM #1
2	01-23-17	ADDENDUM #2



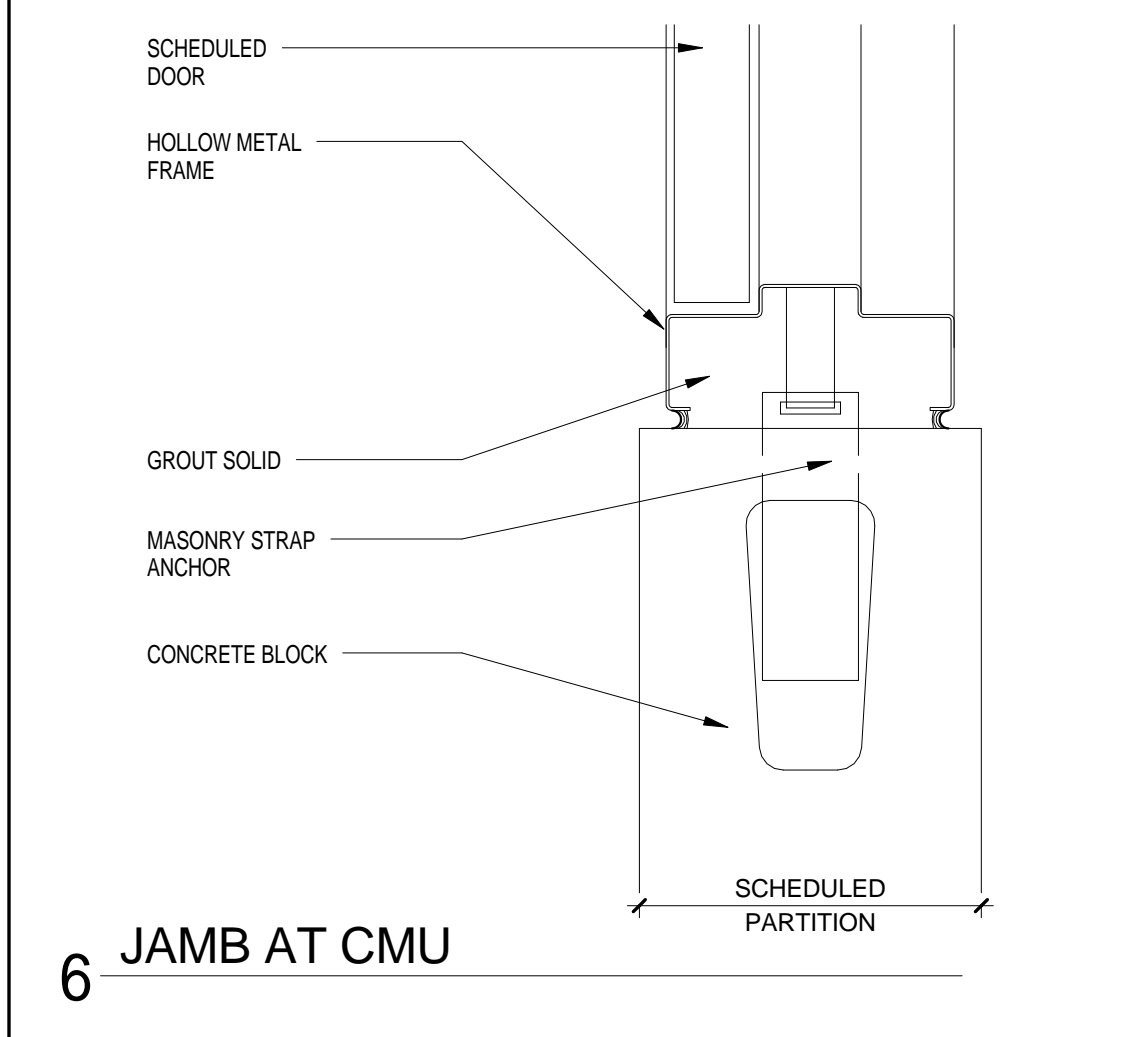
DOOR HARDWARE LOCATIONS
(ILLUSTRATED HARDWARE LOCATIONS TAKE PRECEDENCE OVER REFERENCED STANDARDS)



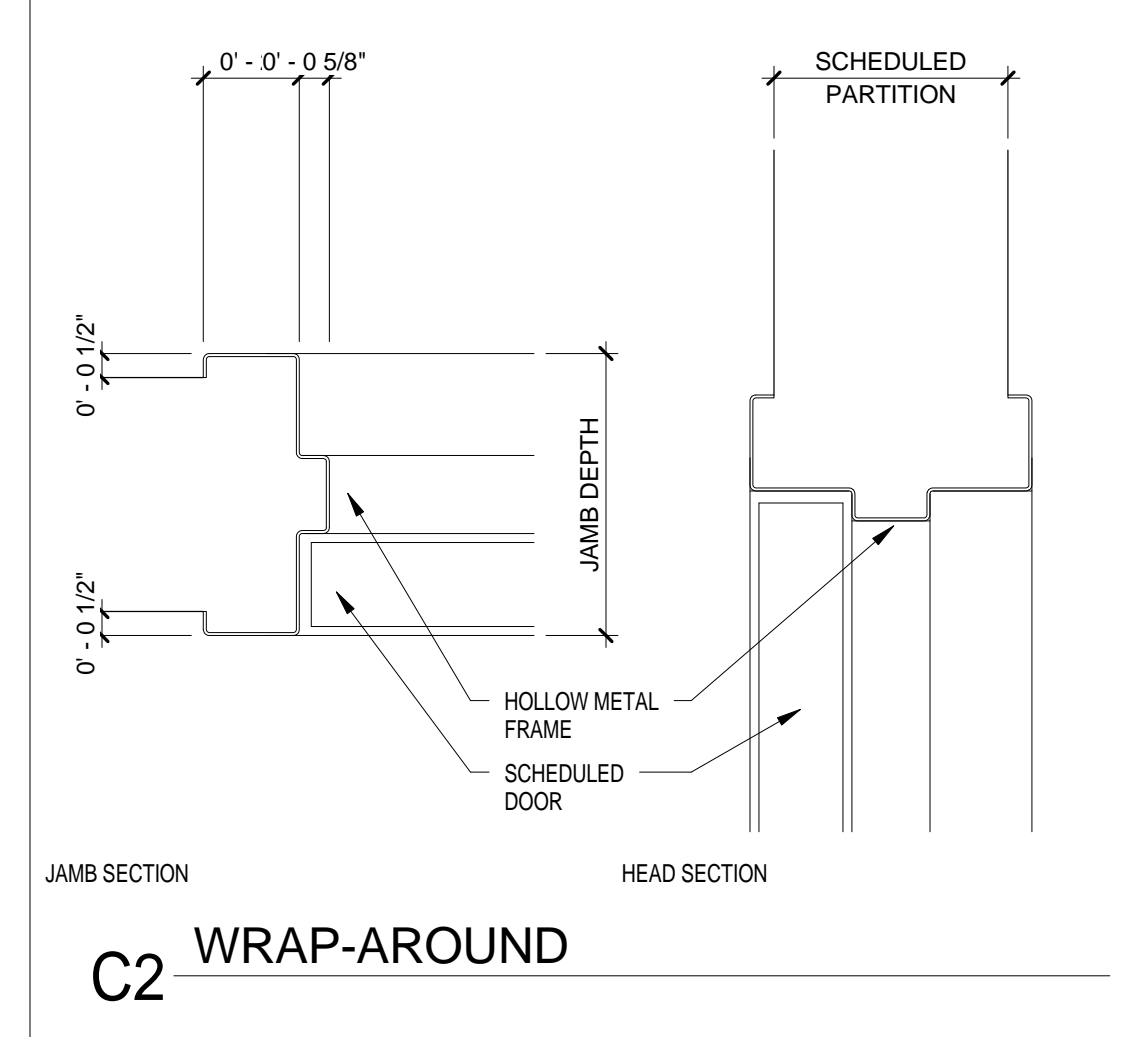
8 HEAD AT CMU



5 HEAD/JAMB DETAIL

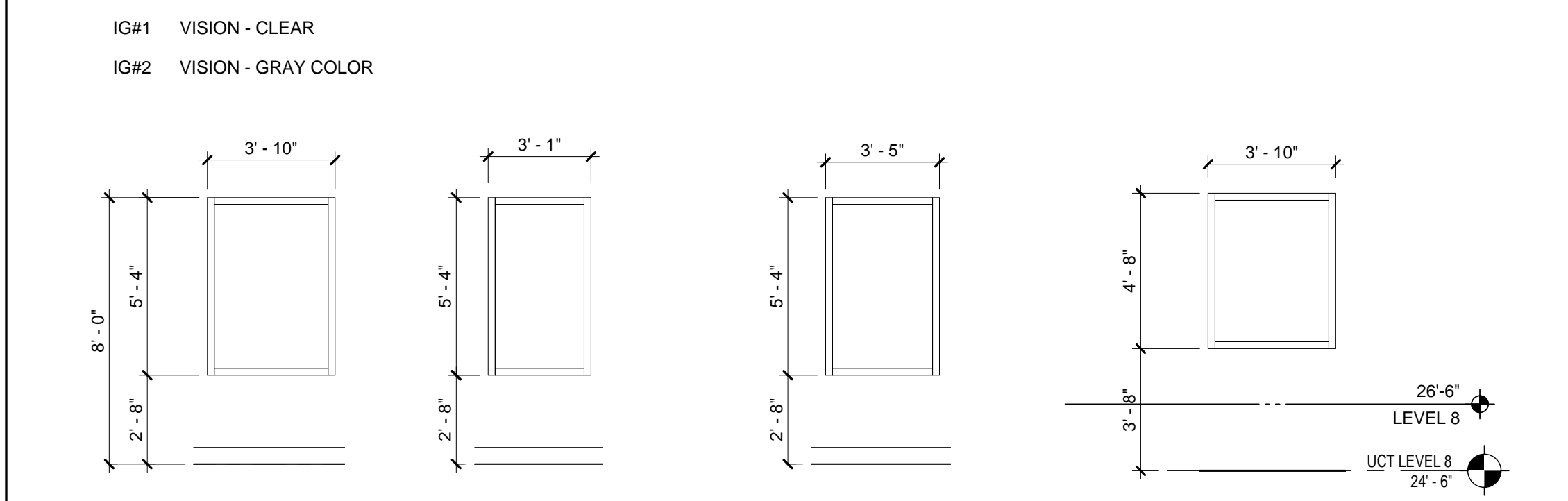


6 JAMB AT CMU

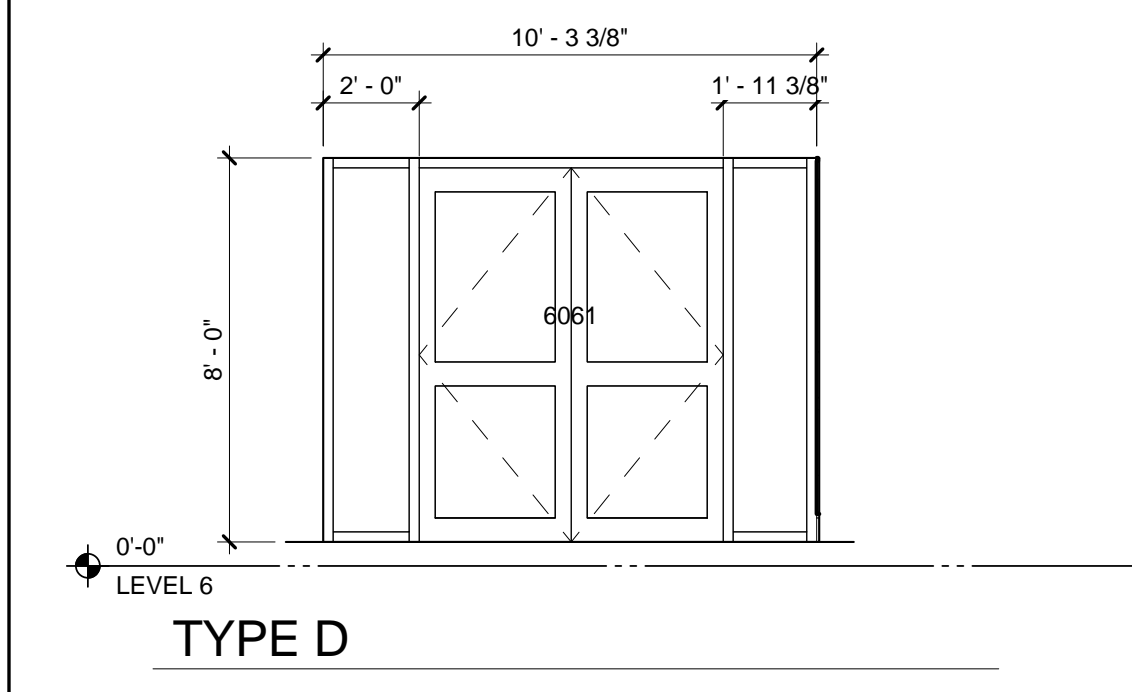


C2 WRAP-AROUND

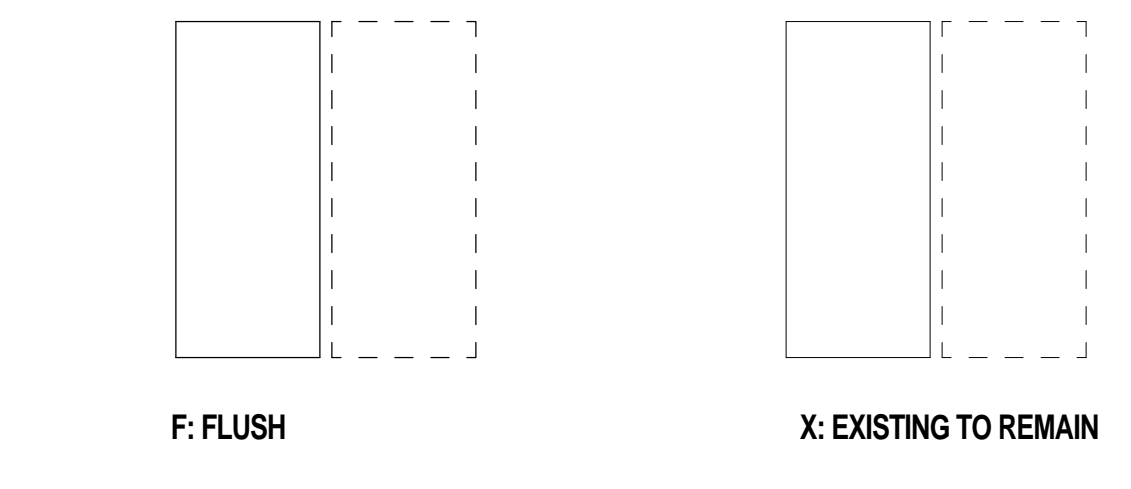
GLASS TYPES



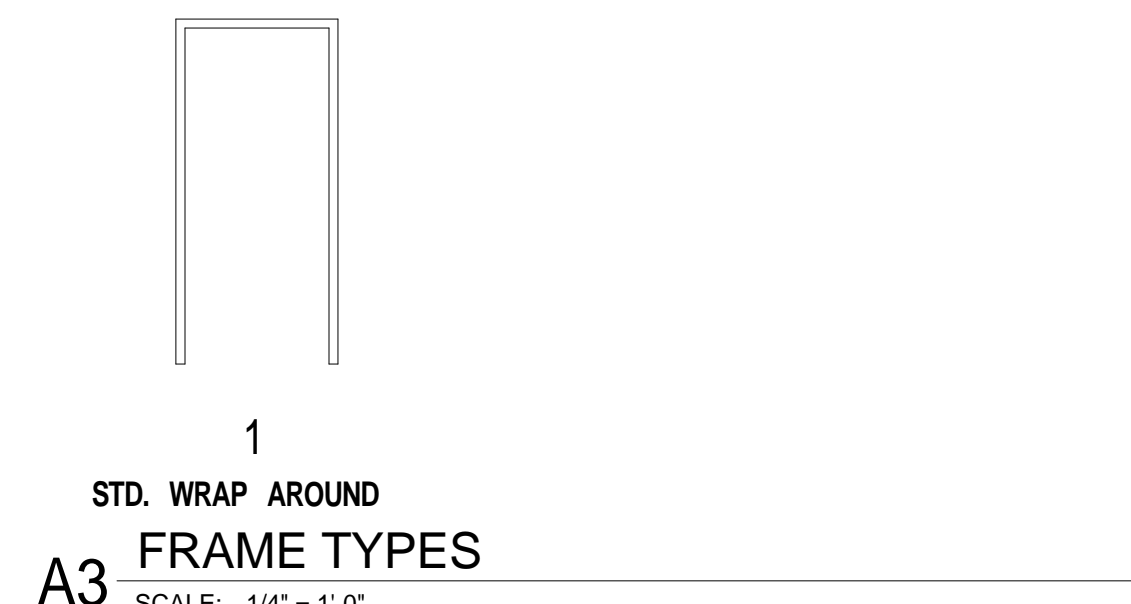
TYPE A TYPE B TYPE C TYPE E



TYPE D



B3 DOOR TYPES
SCALE: 1/4" = 1'-0"



1 STD. WRAP AROUND
A3 FRAME TYPES
SCALE: 1/4" = 1'-0"

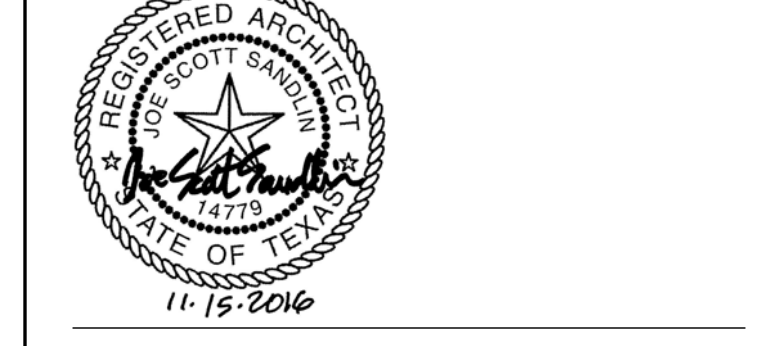
KEY PLAN

UCT
VERTICAL
EXPANSION

UTHealth
The University of Texas
Health Science Center at Houston

UTHSC-H UCT

7000 FANNIN
HOUSTON, TX 77030



DOOR, OPENINGS AND
FRAME TYPES

PHASE: 100% CD
DATE: 2016-11-15

PROJECT NO.
G15311-00
A601
Copyright © 2015 WHR Architects, Inc.

1/23/2017 10:43:29 AM