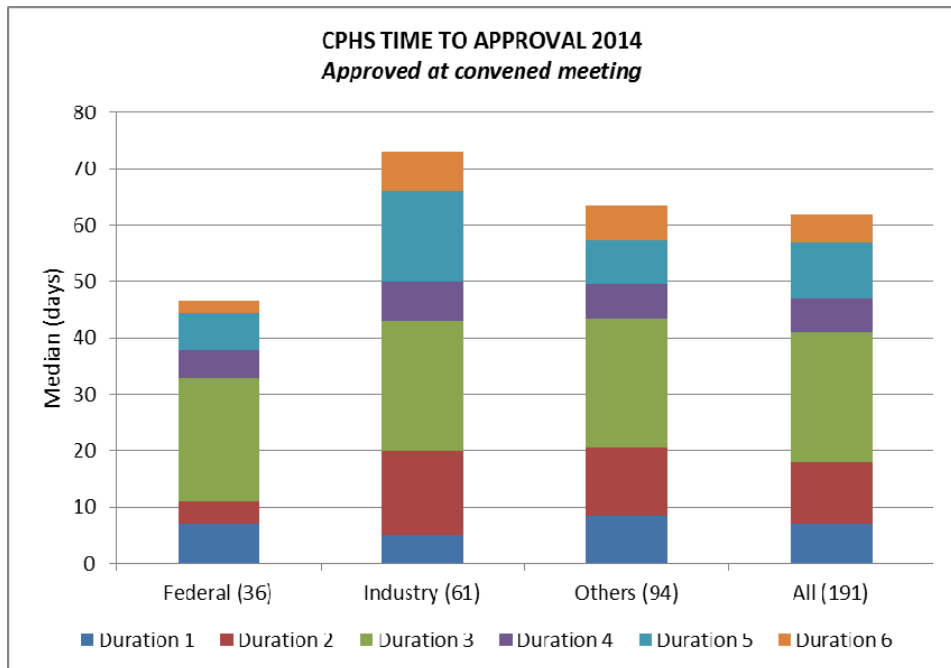
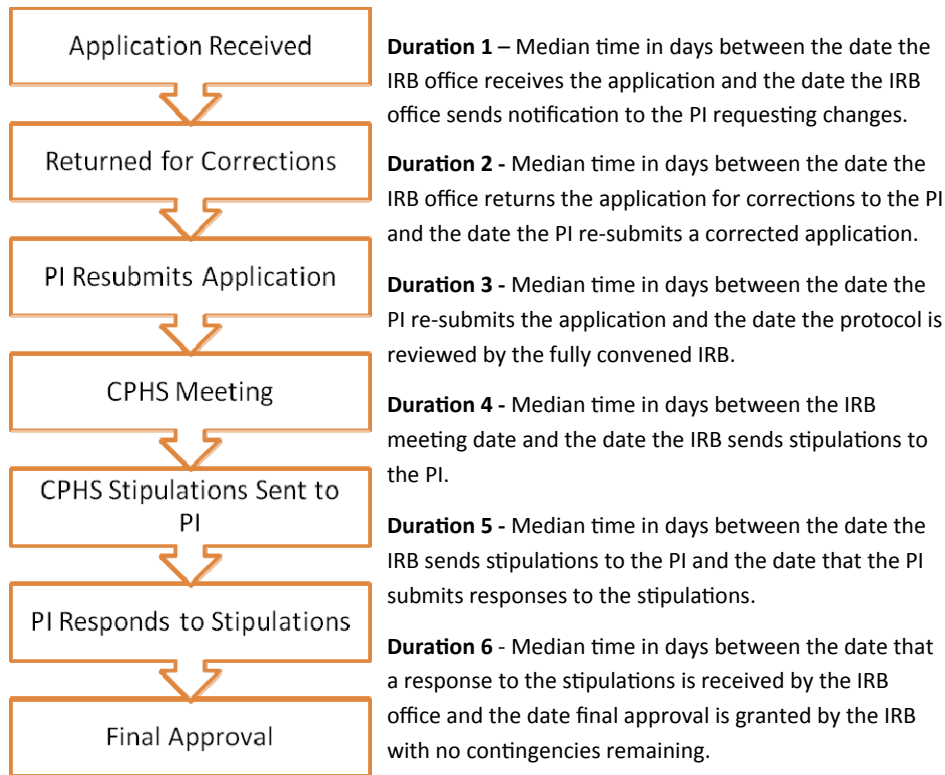


## TIME TO APPROVAL—FULL BOARD ONLY



## REPORT TO FACULTY AND STAFF ON CPHS ACTIVITIES

- 2014-

from

**Anne Dougherty, MD**

**Vice President, Human Research Protection Program**

**Panel 1**

Chair: Rebecca Lunstroth, JD  
 Vice Chair: Kathleen Kennedy, MD  
 Coordinator: Von'Diza Gaines, BBA

**Panel 2**

Chair: John Ribble, MD  
 Vice Chair: George Delclos, PhD  
 Coordinator: Audrey Ester, PhD

**Panel 3**

Chair: Rita Swinford, MD  
 Vice Chair: Cathy Thompson, RN  
 Coordinator: Deborah Dowlin, MA

**Panel 4**

Chair: Max Buja, MD  
 Vice Chair: Ralph Frankowski, PhD  
 Coordinator: Cristal Casanova, BS

**IRB Support Staff**

Director: Cynthia Edmonds, MLA  
 Sr. IRB Coordinator: Sylvia Romo, BSBM  
 Sr. Systems Analyst: Barbara Legate, BS  
 IRB Assistant: Paula Alexander  
 Graduate Assistant: Christian Vilca, BS  
 Email: [cphs@uth.tmc.edu](mailto:cphs@uth.tmc.edu)  
 Website: [www.uth.edu/cphs](http://www.uth.edu/cphs)

**Research Compliance**

Director: Sujatha Sridhar, MBBS, MCE  
 Sr. Regulatory Specialist: Catrina VanAllen, BS  
 Regulatory Specialist: Elizabeth Gendel, PhD  
 Graduate Assistant: Ngozi Okafor, MPH  
 Email: [clinicaltrials@uth.tmc.edu](mailto:clinicaltrials@uth.tmc.edu)  
 Website: [www.uth.edu/ctrc](http://www.uth.edu/ctrc)

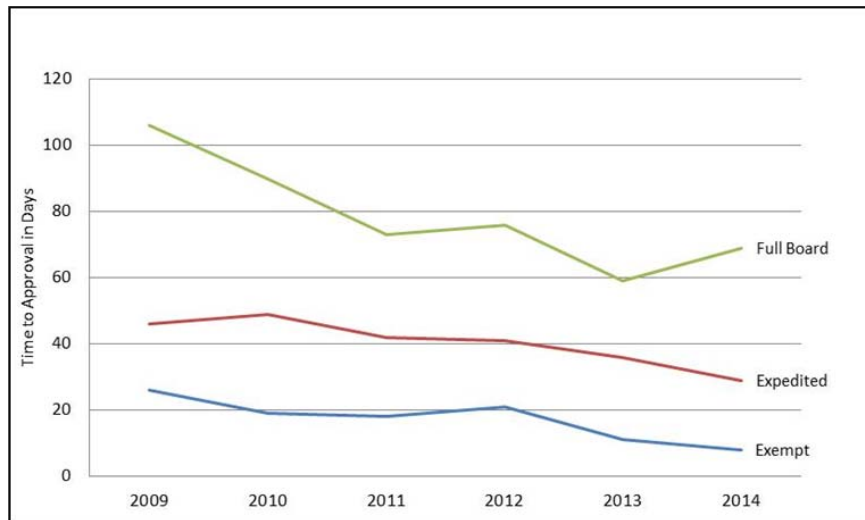
**CPHS Office**

6410 Fannin Street, Suite 1100, Houston, Texas 77030  
 Phone: 713.500.7943



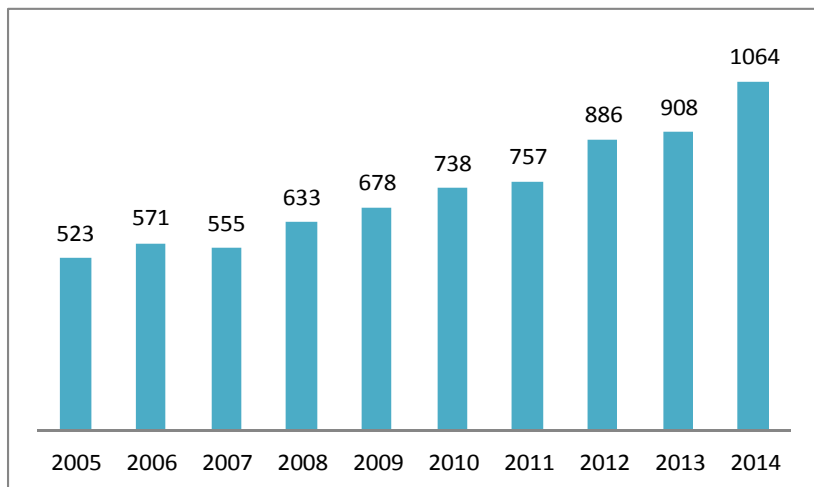
## TIME TO APPROVAL

The median turnaround time (which is the time between initial submission of the protocol and final approval) has steadily decreased. This includes the time that the protocol was on the researcher's queue to address pre-screening concerns, such as missing documents and post review stipulations.



## NEW APPLICATIONS TO CPHS

The number of initial applications to CPHS has been steadily increasing since UT Houston began using iRIS. From just over 500 new applications in 2005, CPHS received 1,064 initial applications in 2014 for review and approval.



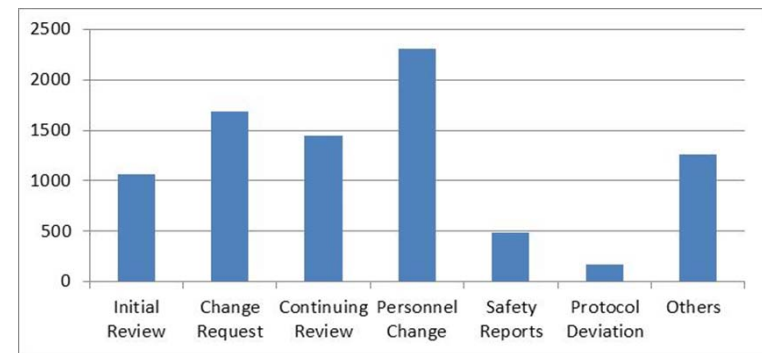
## REVIEW CATEGORY

In the spirit of reducing regulatory burdens, CPHS staff try to assign the most suitable level of review based on the research risks. Over 70% of the protocols approved in 2014 were exempt or reviewed by expedited procedure.

Category	Count
Exempt	329
Expedited	341
Full Board	191
Reciprocity	52
<b>Total</b>	<b>913</b>

## SUBMISSIONS

In 2014, CPHS reviewed and processed 8,415 submissions.



## CPHS FACULTY SURVEY

Responses to the CPHS Faculty Survey, including free text responses, are shared with the CPHS Executive Committee each quarter. The responses are helpful in continuous quality improvement of CPHS processes.

