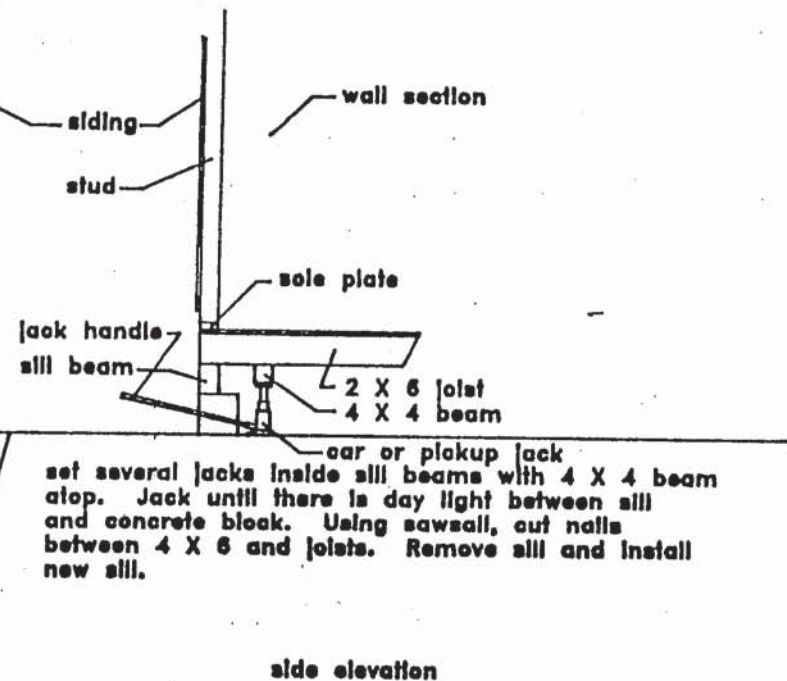
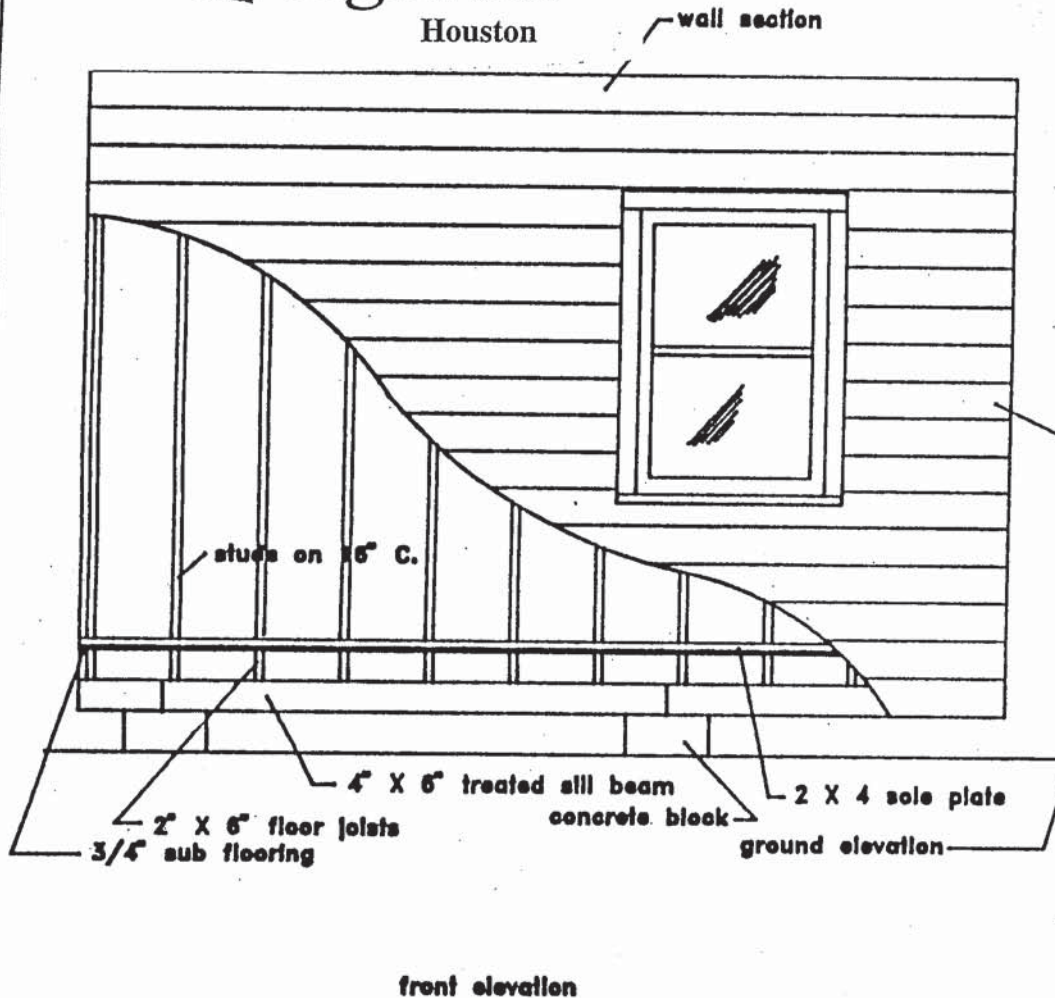




# SILL BEAM REPLACEMENT

There are several ways to remove and replace sill beams. This drawing shows the easiest method. A second way to change out a sill beam is to jack the top and double plate at the top of the studs, carrying the weight up with the studs. Finally, you can jack the sill beam itself, then blocking up the joists behind the sill, relaxing the jacks to free-up the bad sill and installing the new one.



set several jacks inside sill beams with 4 X 4 beam atop. Jack until there is day light between sill and concrete block. Using sawsall, cut nails between 4 X 6 and joists. Remove sill and install new sill.

Volunteers working to help senior citizens on low fixed incomes who have lost the ability to maintain their home financially or physically.