

Animal Research at UTHSCH

Bríd Áine Nic Dhonnchadha, PhD
Manager, Research Compliance
Animal Welfare Committee Office

<https://inside.uth.edu/animal-research>

What is an IACUC?

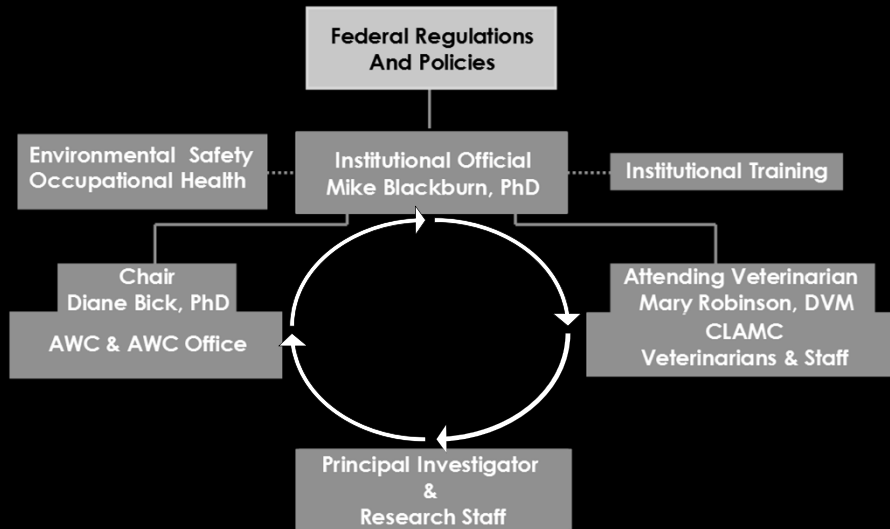
- The Institutional Animal Care and Use Committee
 - Ensures that all vertebrate animals used for research or instruction are treated ethically and humanely. The focus is animal welfare.
- IACUCs are mandated for institutions receiving Public Health Service (PHS) research dollars
- Known locally as the Animal Welfare Committee or AWC

Animal Care Regulations

- Animal Welfare Act
 - Implemented by the United States Department of Agriculture (USDA)
- Public Health Service (PHS) Policy
 - Implemented by the Office of Laboratory Animal Welfare
- The Guide for the Care and Use of Laboratory Animals
 - Standards for the care and use of laboratory animals
- AAALAC
 - Voluntary accreditation



UT



When is an AWC animal protocol required?

- Covers all animal activities performed at UTHSC facilities
- All animal activities, even off site, where UTHSC funds are used to purchase the research animals
- Production of custom antibodies
- Tissue harvest protocols with antemortem manipulations

Requirements to conduct research

- Approved animal protocol-PI must be a faculty member
- Completion of CLAMC training
- Enrollment in Occupational Health Program
- Approval for the use of chemical, biological or radioactive agents
 - SCRO approval for the use of human stem cell in animals
- Disclosure of Research Conflicts of Interest
- Submission of the annual Financial Disclosure Statement

Animal Protocol Submission

<https://iris.uth.tmc.edu>

Log In

iRIS *Integrated Research Information Software*


UTHealth[®]
 The University of Texas
 Health Science Center at Houston

User ID:

Password:

System/Browser Requirements

For iRIS assistance, call 713-500-7960. For password problems, call the Help Desk at 713-486-4848. System timeout after 120 minutes. SAVE your work!

Terms of Use | Privacy Statement
 Copyright © 2001-2017 iMediRIS Data Corporation. All rights reserved.
 Version 10.03.1 Build 778 Updated 2017/09/14 10:15

Resources for Animal
 Researchers

- ▶ Facility Inspections
- ▶ Investigator Training

iRIS Training

FAQs

Medicine and Care (CLAMC)

AWC Considerations for Animal Use

- The rationale provided for using animals
 - What is the significance of this research that can justify animal use?
- Appropriateness of the species
 - Why use this species? Justification for the number of animals to be used.
- Were alternatives considered for this research?
 - Minimize the pain and suffering of the animals used
 - Use of cell lines for cell cultures, use of computer simulations,
- Consideration of the “Three Rs”
 - Replacement, Reduction, Refinement

AWC website resources-Policies for Animal Research

<https://inside.uth.edu/animal-research/index.htm>

Resources for Animal Researchers

Policies for Animal Research

Occupational Health Program for Personnel with Animal Exposure

Reporting Animal Welfare Concerns

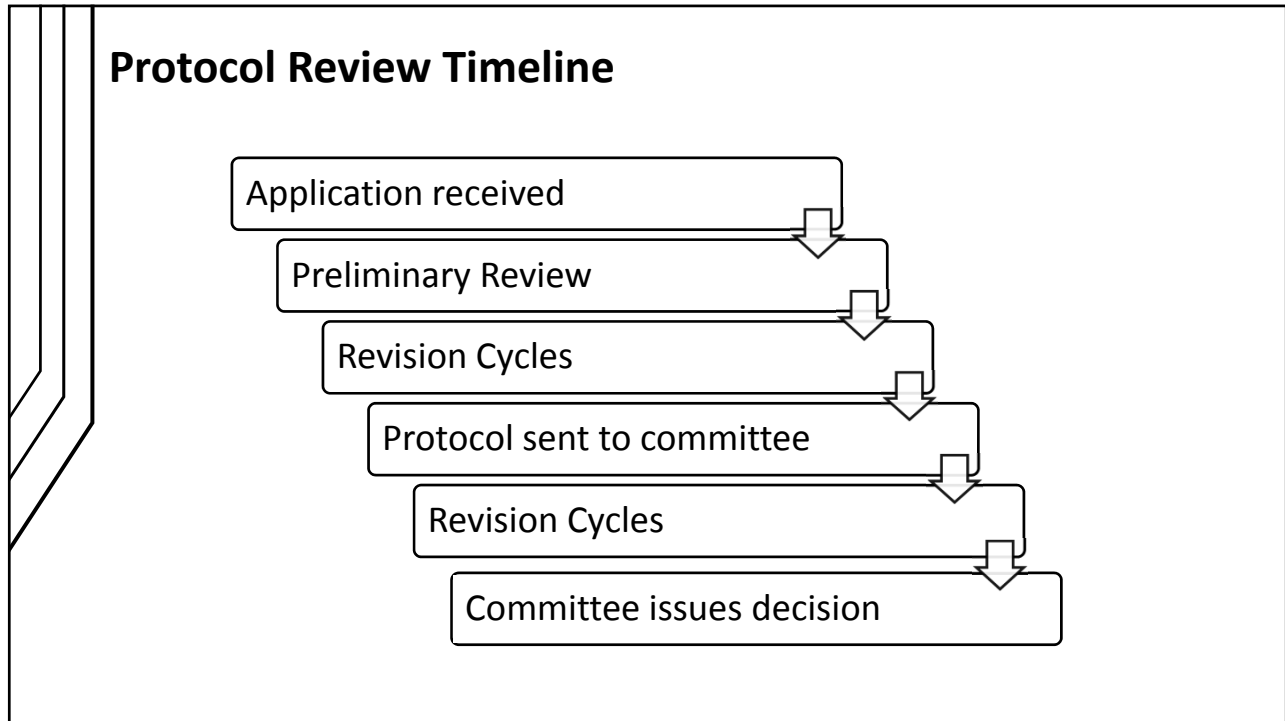
Contact Us

- Non-pharmaceutical Grade Compound (NPG) Policy
- Prolonged Restraint Policy
- Rabbit Environmental Enrichment Policy
- Rodent Survival Surgery Policy
- Rodent Tail Clipping Policy
- Rodent Toe Clipping Policy
- Rodent Tumor Policy

AWC website resources-Breeding Calculator

<https://inside.uth.edu/animal-research/index.htm>

Protocol:			
Strain:			
<i>Number of experimental mice needed</i>			
Number mice needed for experiments	<input type="text" value="3"/>	Colony productivity (pups/week/female)	0.75
Number of years remaining in project	3		
Sexes needed	Both		Project
Breeding scheme	Homozygote vs. homozygote	Number of mice needed (incl. surplus)	0
Surplus mice (fudge factor)	10%		
<i>Colony productivity</i>			
Average number of pups weaned per litter	6	Number of female breeders needed for production	0
Average number of litters produced per breeder female	4	Number of male breeders needed for production	0
Average productive female's breeding lifespan (weeks)	32	Total number of breeders needed for production	<input type="text" value="0"/>
Mating system	Pair	Number of female breeders needed for replacement	0
		Number of male breeders needed for replacement	0
		Total number of breeders needed for replacement	<input type="text" value="0"/>
		TOTAL NUMBER OF BREEDERS NEEDED	<input type="text" value="0"/>
		TOTAL SURPLUS MICE PRODUCED	<input type="text" value="0"/>



AWC website resources

<https://inside.uth.edu/animal-research/index.htm>

Resources for Animal Researchers	Suggested Initial Submission Date	Return Responses to Pre-Review by	For Review on:
Grant Guidance	January 2, 2019	January 14, 2019	January 25, 2019
Meeting Dates and Protocol Guidelines	January 31, 2019	February 11, 2019	February 22, 2019
Forms and Resources	February 25, 2018	February 11, 2019	March 22, 2019
Policies for Animal Research	April 1, 2019	April 15, 2019	April 26, 2019
	April 29, 2019	May 13, 2019	May 24, 2019

What happens post-approval?

- Post-approval monitoring visits
- Amendments
 - New personnel, new strains, experiments & procedures
- Report adverse events & protocol deviations
- Submission of annual review(s)
 - USDA-covered species
- 3-year renewal or de novo review

AWC website resources-Grant Guidance

<https://inside.uth.edu/animal-research/index.htm>

Animal Research at
UTHealth

Animal Research at
UTHealth

AAALAC Accreditation

Animal Welfare
Committee

Research Facilities

FAQs

▶ Facility Inspections

▶ Investigator Training

iRIS Training

Grant Guidance

Meeting Dates and
Reservations

Grant Guidance

Application Information

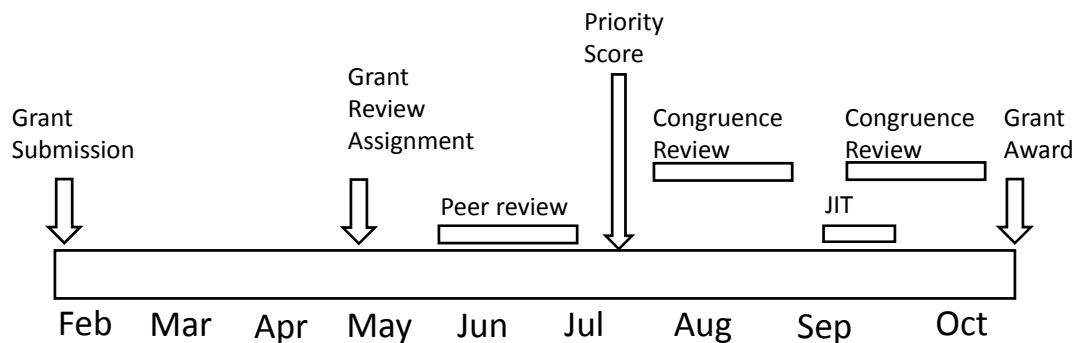
- AAALAC Accreditation Current Status and Date: Full Accreditation (Unit 000455), March 20, 2018.
- Original date of AAALAC accreditation: May 31, 1978
- PHS Assurance Number: A3413-01 or D16-00257, either number is acceptable
- USDA Registration Number: 74-R-0068
- NIH Guidance for Completion of the Vertebrate Animal Section for [grants](#) and [contracts](#).
- Description of the Animal Care and Use Resources and Program is provided on the [CLAMC](#) link.

Grant Congruency-Does the AWC Protocol match the grant?

- Satisfy the requirements of the PHS Policy & NIH grants policy
 - General scope of the work
 - Experimental procedures and endpoints
 - Species
 - Euthanasia Method
 - Approximate number of animals

- Grant animal activities \neq Animal Protocol Activities
 - Amend protocol to be consistent with grant
 - Inform NIH if procedure will not be conducted as originally proposed

Typical Timeline for Grant Submission



AWC Office: (713) 500-3625

awc@uth.tmc.edu

AWC website: <https://inside.uth.edu/animal-research/>

CLAMC main line: (713) 500-7728

acare@uth.tmc.edu

iRIS helpline: 713-500-7960, option #2

