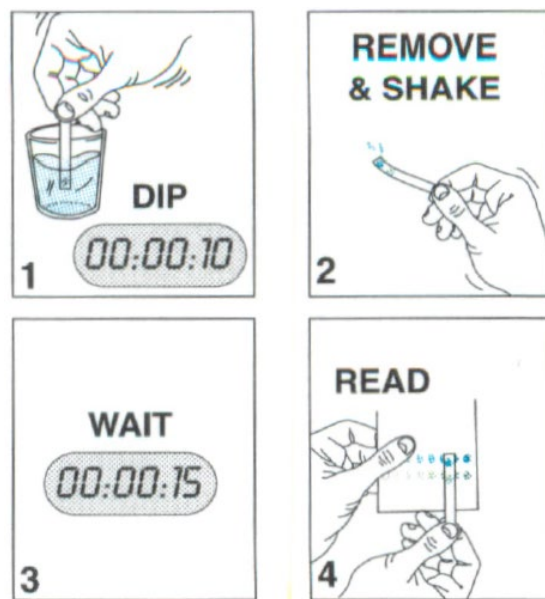
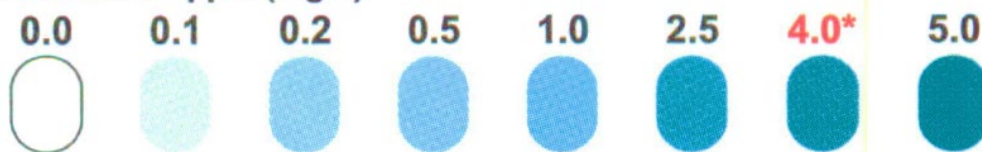


Free and Total Chlorine Test Procedure

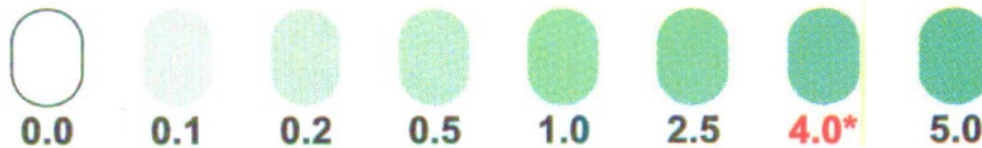
1. Turn on faucet and let the water run for **1 minute** before collecting a sample. Open foil packet and remove test strip. Dip test strip in water for **10 seconds**, gently moving the strip back and forth.
2. Remove the strip and gently shake excess water off.
3. Wait **15 seconds**.
4. Match the results to the color chart as best judgement indicates. Houston uses free chlorine and chloramine (detected as total chlorine) to disinfect water. Concentration should be between **0.2 ppm to 4 ppm**.



Free Chlorine – ppm (mg/L)



Total Chlorine – ppm (mg/L)



* EPA Maximum Recommended residual concentration

*for assistance call: 713-500-5832